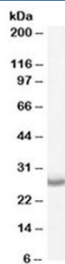


APH1A Antibody (R34323)

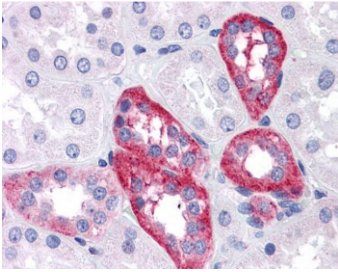
Catalog No.	Formulation	Size
R34323-100UG	0.5 mg/ml in 1X TBS, pH7.3, with 0.5% BSA (US sourced) and 0.02% sodium azide	100 ug

[Bulk quote request](#)

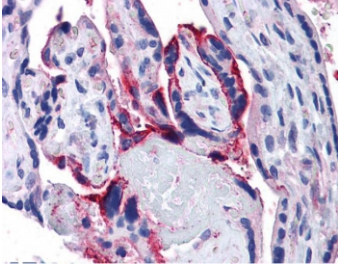
Availability	1-3 business days
Species Reactivity	Human
Predicted Reactivity	Mouse, Rat, Dog, Pig, Cow
Format	Antigen affinity purified
Host	Goat
Clonality	Polyclonal (goat origin)
Isotype	Goat Ig
Purity	Antigen affinity
Gene ID	51107
Localization	Cytoplasmic
Applications	Western Blot : 0.05-0.1ug/ml IHC (FFPE) : 5ug/ml ELISA (peptide) LOD : 1:128000
Limitations	This APH1A antibody is available for research use only.



Western blot testing of human brain [cerebral cortex] lysate with APH1A antibody at 0.05ug/ml. Predicted molecular weight: ~27 kDa.



IHC testing of FFPE human kidney tissue with APH1A antibody at 5ug/ml. Required HIER: steamed antigen retrieval with pH6 citrate buffer; AP-staining.



IHC testing of FFPE human placenta tissue with APH1A antibody at 5ug/ml. Required HIER: steamed antigen retrieval with pH6 citrate buffer; AP-staining.

Description

Additional name(s) for this target protein: Anterior pharynx defective 1 homolog A

Application Notes

Optimal dilution of the APH1A antibody should be determined by the researcher.

1. This APH1A antibody is specific for isoforms 1 and 2.

Immunogen

Amino acids HVTDRSDARLQYG were used as the immunogen for this APH1A antibody.

Storage

Aliquot and store the APH1A antibody at -20oC.