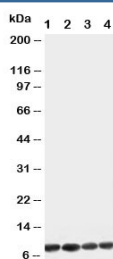


Apelin Antibody (R30574)

| Catalog No. | Formulation | Size |
|-------------|---|--------|
| R30574 | 0.5mg/ml if reconstituted with 0.2ml sterile DI water | 100 ug |

Bulk quote request

| | |
|---------------------------|--|
| Availability | 1-3 business days |
| Species Reactivity | Human, Mouse, Rat |
| Format | Antigen affinity purified |
| Clonality | Polyclonal (rabbit origin) |
| Isotype | Rabbit IgG |
| Purity | Antigen affinity |
| Buffer | Lyophilized from 1X PBS with 2.5% BSA and 0.025% sodium azide/thimerosal |
| UniProt | Q9ULZ1 |
| Applications | Western Blot : 0.5-1ug/ml |
| Limitations | This Apelin antibody is available for research use only. |



Western blot testing of Apelin antibody and Lane 1: U87; 2: MCF-7; 3: HeLa; 4: MM453 cell lysate

Description

Apelin is a neuropeptide expressed in the supraoptic and paraventricular nuclei that acts on specific receptors located on vasopressinergic neurons. The gene is at Xq25-q26.3, based on sequence similarity between the Apelin sequence and a chromosome X PAC clone. This gene encodes a peptide that functions as an endogenous ligand for the G protein coupled receptor APJ. The encoded protein is synthesized as a prepropeptide that is processed into biologically active C-terminal fragments. The peptide fragments activate different tissue specific signaling pathways that regulate diverse biological functions including fluid homeostasis, cardiovascular function and insulin secretion. This protein also functions as a coreceptor for the human immunodeficiency virus 1.

Application Notes

The stated application concentrations are suggested starting amounts. Titration of the Apelin antibody may be required due to differences in protocols and secondary/substrate sensitivity.

Immunogen

An amino acid sequence from the C-terminus of Apelin (RKFRRQRPRLSHKGPMPPF) was used as the immunogen for this Apelin antibody (100% homologous in human, mouse and rat).

Storage

After reconstitution, the Apelin antibody can be stored for up to one month at 4°C. For long-term, aliquot and store at -20°C. Avoid repeated freezing and thawing.