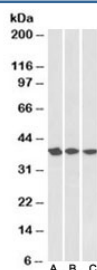


APE1 Antibody (R35047)

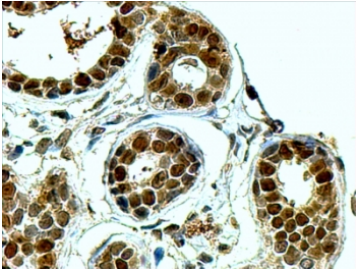
Catalog No.	Formulation	Size
R35047-100UG	0.5 mg/ml in 1X TBS, pH7.3, with 0.5% BSA (US sourced) and 0.02% sodium azide	100 ug

[Bulk quote request](#)

Availability	1-3 business days
Species Reactivity	Human
Predicted Reactivity	Cow, Dog, Pig
Format	Antigen affinity purified
Host	Goat
Clonality	Polyclonal (goat origin)
Isotype	Goat Ig
Purity	Antigen affinity
Gene ID	328
Applications	Western Blot : 0.1-0.3ug/ml Immunohistochemistry (FFPE) : 4-6ug/ml ELISA (peptide) LOD : 1:16000
Limitations	This APE1 antibody is available for research use only.



Western blot testing of A431 [A], HeLa [B] and MCF7 [C] nuclear lysates with APE1 antibody at 0.3ug/ml. Expected/observed molecular weight: ~38kDa.



IHC staining of FFPE human breast with APE1 antibody at 4ug/ml. HIER: steamed with pH9 Tris/EDTA buffer, HRP-staining.

Description

Additional name(s) for this target protein: AP endonuclease class 1; APEX1

Application Notes

Optimal dilution of the APE1 antibody should be determined by the researcher.

Immunogen

Amino acids PKRGKKGAVAEDGD were used as the immunogen for this APE1 antibody.

Storage

Aliquot and store the APE1 antibody at -20oC.