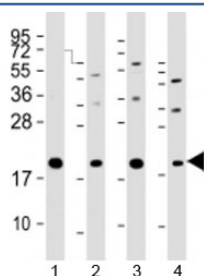


APC11 Antibody / ANAPC11 (F53960)

Catalog No.	Formulation	Size
F53960-0.2ML	In 1X PBS, pH 7.4, with 0.09% sodium azide	0.2 ml
F53960-0.05ML	In 1X PBS, pH 7.4, with 0.09% sodium azide	0.05 ml

[Bulk quote request](#)

Availability	1-3 business days
Species Reactivity	Human
Predicted Reactivity	Bovine, Mouse
Format	Antigen affinity purified
Clonality	Polyclonal (rabbit origin)
Isotype	Rabbit Ig
Purity	Antigen affinity
UniProt	Q9NYG5
Applications	Western Blot : 1:1000-2000
Limitations	This APC11 antibody is available for research use only.



Western blot testing of human 1) HeLa, 2) PC-3, 3) T47D and 4) U-2OS cell lysate with APC11 antibody at 1:2000. Predicted molecular weight: ~10 kDa (Q9NYG5-1) or ~20 kDa (Q9NYG5-2).

Description

Anaphase-promoting complex subunit 11, together with the cullin protein ANAPC2, constitutes the catalytic component of the anaphase promoting complex/cyclosome (APC/C), a cell cycle-regulated E3 ubiquitin ligase that controls progression through mitosis and the G1 phase of the cell cycle. The APC/C complex acts by mediating ubiquitination and subsequent degradation of target proteins: it mainly mediates the formation of 'Lys-11'-linked polyubiquitin chains and, to a lower extent, the formation of 'Lys-48'- and 'Lys-63'-linked polyubiquitin chains. May recruit the E2 ubiquitin-conjugating enzymes to the complex.

Application Notes

Titration of the APC11 antibody may be required due to differences in protocols and secondary/substrate sensitivity.

Immunogen

A portion of amino acids 56-94 from the human protein was used as the immunogen for the APC11 antibody.

Storage

Aliquot the APC11 antibody and store frozen at -20oC or colder. Avoid repeated freeze-thaw cycles.