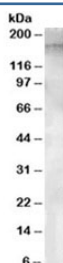


## APA Antibody / Aminopeptidase A / ENPEP (R33949)

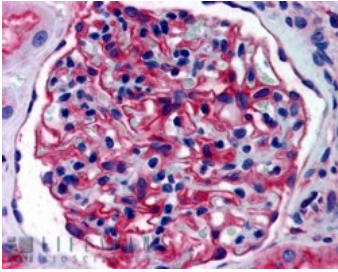
| Catalog No.  | Formulation   | Size   |
|--------------|---|--------|
| R33949-100UG | 0.5 mg/ml in 1X TBS, pH7.3, with 0.5% BSA (US sourced) and 0.02% sodium azide | 100 ug |

[Bulk quote request](#)

|                      |  |
|----------------------|--|
| Availability         | 1-3 business days  |
| Species Reactivity   | Human  |
| Predicted Reactivity | Cow, Dog, Mouse, Pig, Rat  |
| Format               | Antigen affinity purified  |
| Clonality            | Polyclonal (goat origin)   |
| Isotype              | Goat Ig  |
| Purity               | Antigen affinity   |
| UniProt              | Q07075   |
| Gene ID              | 2028   |
| Applications         | Western Blot : 1-3ug/ml<br>Immunohistochemistry (FFPE) : 3-5ug/ml<br>ELISA (peptide) LOD : 1:64000 |
| Limitations          | This APA antibody is available for research use only.  |



Western blot testing of human testis lysate with APA antibody at 1ug/ml. Predicted molecular weight ~109/160 kDa (unmodified/glycosylated).



IHC staining of FFPE human kidney with APA antibody at 4ug/ml. HIER: steamed with pH6 citrate buffer, AP-staining.

## Description

Additional name(s) for this target protein: Aminopeptidase A; ENPEP; gp160 human kidney differentiation antigen

## Application Notes

Optimal dilution of the APA antibody should be determined by the researcher.

## Immunogen

Amino acids EQYQKTSLAQEKEK were used as the immunogen for this APA antibody.

## Storage

Aliquot and store the APA antibody at -20oC.