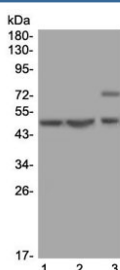


## AP2M1 Antibody / AP-2 complex subunit mu (R32627)

Catalog No.	Formulation	Size
R32627	0.5mg/ml if reconstituted with 0.2ml sterile DI water	100 ug

**Bulk quote request**

<b>Availability</b>	1-3 business days
<b>Species Reactivity</b>	Human, Rat
<b>Format</b>	Antigen affinity purified
<b>Clonality</b>	Polyclonal (rabbit origin)
<b>Isotype</b>	Rabbit IgG
<b>Purity</b>	Antigen affinity
<b>Buffer</b>	Lyophilized from 1X PBS with 2.5% BSA and 0.025% sodium azide
<b>UniProt</b>	Q96CW1
<b>Applications</b>	Western Blot : 0.5-1ug/ml
<b>Limitations</b>	This AP2M1 antibody is available for research use only.



Western blot testing of 1) human U-2 OS, 2) human MCF7 and 3) rat kidney lysate with AP2M1 antibody at 0.5ug/ml. Predicted molecular weight ~50 kDa.

## Description

AP-2 complex subunit mu is a protein that in humans is encoded by the AP2M1 gene. This gene encodes a subunit of the heterotetrameric coat assembly protein complex 2 (AP2), which belongs to the adaptor complexes medium subunits family. The encoded protein is required for the activity of a vacuolar ATPase, which is responsible for proton pumping occurring in the acidification of endosomes and lysosomes. The encoded protein may also play an important role in regulating the intracellular trafficking and function of CTLA-4 protein. Three transcript variants encoding different isoforms have been found for this gene.

## Application Notes

Optimal dilution of the AP2M1 antibody should be determined by the researcher.

## Immunogen

Amino acids 399-435 (LKVRYLKVFEPKLNYSDDHVIKWVRYIGRSGIYETRC-human) were used as the immunogen for the AP2M1 antibody.

## Storage

After reconstitution, the AP2M1 antibody can be stored for up to one month at 4°C. For long-term, aliquot and store at -20°C. Avoid repeated freezing and thawing.