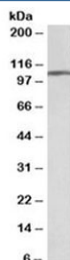


AP2A1 Antibody (R33860)

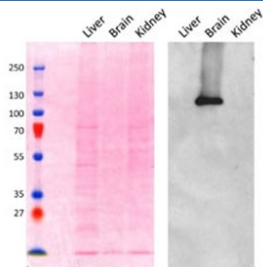
Catalog No.	Formulation	Size
R33860-100UG	0.5 mg/ml in 1X TBS, pH7.3, with 0.5% BSA (US sourced) and 0.02% sodium azide	100 ug

[Bulk quote request](#)

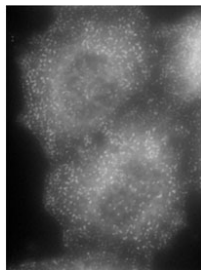
Availability	1-3 business days
Species Reactivity	Human, Mouse
Predicted Reactivity	Rat, Pig, Cow
Format	Antigen affinity purified
Clonality	Polyclonal (goat origin)
Isotype	Goat Ig
Purity	Antigen affinity
UniProt	O95782
Gene ID	160
Applications	Western Blot : 0.01-0.03ug/ml Immunocytochemistry : suitable IHC (FFPE) : 5ug/ml ELISA (peptide) LOD : 1:128000
Limitations	This AP2A1 antibody is available for research use only.



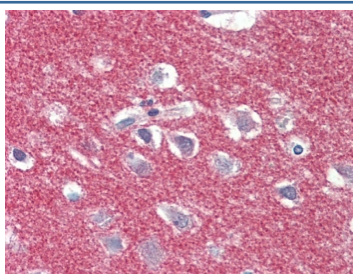
Western blot testing of human frontal cortex lysate with AP2A1 antibody at 0.01ug/ml.
Predicted molecular weight: ~108 kDa.



Western blot testing of mouse brain lysate with AP2A1 antibody at 0.1ug/ml. The left panel shows the blot stained with Ponceau red for total protein (~5ug/lane).



ICC staining of methanol-fixed HeLa cells transfected with mouse Ap2a1 using AP2A1 antibody at 0.1ug/ml.



IHC testing of FFPE human brain (cortex) with AP2A1 antibody at 5ug/ml. Steamed antigen retrieval with citrate buffer pH 6, AP-staining.

Description

Additional name(s) for this target protein: Adaptor-related protein complex 2, alpha 1 subunit; Alpha 1 adaptin

Application Notes

Optimal dilution of the AP2A1 antibody should be determined by the researcher.

1. This AP2A1 antibody is specific for isoform 1 of the protein.

Immunogen

Amino acids ELEPPAPESPMALLADPAPAAD were used as the immunogen for this AP2A1 antibody.

Storage

Aliquot and store the AP2A1 antibody at -20oC.

