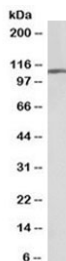


AP2A1 Antibody Biotin Conjugate (R33860BTN)

Catalog No.	Formulation	Size
R33860BTN	0.5 mg/ml in 1X TBS, pH7.3, with 0.5% BSA (US sourced) and 0.02% sodium azide	100 ug

[Bulk quote request](#)

Availability	1-3 business days
Species Reactivity	Human, Mouse
Predicted Reactivity	Cow, Pig, Rat
Format	Biotin Conjugate
Host	Goat
Clonality	Polyclonal (goat origin)
Isotype	Goat Ig
Purity	Antigen affinity
UniProt	Q95782
Gene ID	160
Applications	Western Blot : 0.01-0.03ug/ml ELISA (peptide) LOD : 1:128000
Limitations	This AP2A1 Antibody Biotin Conjugate is available for research use only.



AP2A1 Antibody Biotin Conjugate Human Brain WB. Western blot testing of human frontal cortex lysate with AP2A1 Antibody Biotin Conjugate at 0.01 ug/ml. A specific band was detected at approximately 108 kDa, consistent with the predicted molecular weight of AP2A1. This biotinylated AP2A1 antibody format supports detection using avidin-biotin or streptavidin-based systems. AP2A1 Antibody Biotin Conjugate supports studies of alpha adaptin expression, AP-2 adaptor complex function, clathrin-mediated endocytosis and neuronal membrane trafficking pathways.

Description

AP2A1 Antibody Biotin Conjugate detects adaptor related protein complex 2 subunit alpha 1, a component of the AP-2 adaptor complex involved in membrane trafficking and protein transport pathways. AP2A1, also known as alpha adaptin, participates in the regulation of cargo recognition and vesicle formation during clathrin-mediated endocytosis. This

biotinylated antibody format allows researchers to incorporate AP2A1 detection into avidin-biotin and streptavidin-based detection systems.

The AP-2 adaptor complex functions at the plasma membrane where it coordinates internalization of receptors, transport proteins and other membrane-associated molecules. AP2A1 contributes to the organization of this complex and supports interactions required for coated vesicle formation. AP2A1 Antibody Biotin Conjugate provides an alternative detection format for researchers studying adaptor protein localization, membrane dynamics and intracellular transport processes.

Biotin conjugated antibodies are commonly used in applications requiring signal amplification, flexible detection chemistry or compatibility with streptavidin-linked reporters. The strong interaction between biotin and streptavidin enables use with multiple detection platforms, including enzyme-based and fluorescent labeling approaches. A biotin AP2A1 antibody format can be useful for specialized experimental workflows where direct compatibility with streptavidin reagents is preferred.

Research involving AP2A1 provides insight into cellular mechanisms controlling receptor internalization, vesicle trafficking and communication between intracellular compartments. As a major component of the AP-2 adaptor complex, alpha adaptin is widely studied in pathways involving membrane organization, protein sorting and endocytic regulation.

AP2A1 Antibody Biotin Conjugate applications include detection of AP2A1 expression and localization using compatible avidin-biotin or streptavidin detection systems. NSJ Bioreagents provides AP2A1 Antibody Biotin Conjugate for researchers studying alpha adaptin, clathrin-mediated endocytosis, adaptor protein complexes and cellular trafficking pathways.

Alpha-Adaptin / AP2A1 Antibody detects an AP-2 complex component involved in receptor internalization and vesicle trafficking; additional clathrin adaptor protein research tools are available on our [AP2A1 Antibody / Clathrin Adaptor Protein Antibody](#) page.

Application Notes

Optimal dilution of the AP2A1 Antibody Biotin Conjugate should be determined by the researcher.

1. This AP2A1 antibody is specific for isoform 1 of the protein.

Immunogen

Amino acids ELEPPAPESPMALLADPAPAAD were used as the immunogen for this AP2A1 Antibody Biotin Conjugate.

Storage

Aliquot and store the AP2A1 Antibody Biotin Conjugate at -20oC.

Alternate Names

Biotin AP2A1 Antibody, AP2A1 Biotin Antibody, Alpha Adaptin Antibody, AP-2 Alpha Antibody, Adaptor Protein Complex 2 Alpha 1 Antibody, Clathrin Adaptor Protein Antibody

