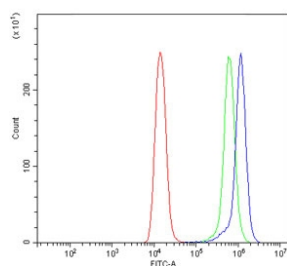


AP2A1 Antibody / Alpha Adaptin (RQ6543)

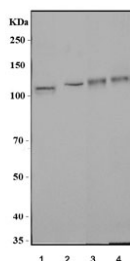
| Catalog No. | Formulation | Size |
|-------------|---|--------|
| RQ6543 | 0.5mg/ml if reconstituted with 0.2ml sterile DI water | 100 ug |

Bulk quote request

| | |
|---------------------------|--|
| Availability | 1-3 business days |
| Species Reactivity | Human, Mouse, Rat |
| Format | Antigen affinity purified |
| Host | Rabbit |
| Clonality | Polyclonal (rabbit origin) |
| Isotype | Rabbit IgG |
| Purity | Affinity purified |
| Buffer | Lyophilized from 1X PBS with 2% Trehalose |
| UniProt | O95782 |
| Applications | Western Blot : 1-2ug/ml Flow Cytometry : 1-3ug/million cells Direct ELISA : 0.1-0.5ug/ml |
| Limitations | This AP2A1 antibody is available for research use only. |



Flow cytometry testing of human Raji cells with AP2A1 antibody at 1ug/million cells (blocked with goat sera); Red=cells alone, Green=isotype control, Blue= AP2A1 antibody.



Western blot testing of 1) human K562, 2) human PC-3, 3) rat brain and 4) mouse brain lysate with AP2A1 antibody. Predicted molecular weight ~108 kDa.

Description

AP-2 complex subunit alpha-1 is a protein that in humans is encoded by the AP2A1 gene. This gene encodes the alpha 1 adaptin subunit of the adaptor protein 2 (AP-2) complex found in clathrin coated vesicles. The AP-2 complex is a heterotetramer consisting of two large adaptins (alpha or beta), a medium adaptin (mu), and a small adaptin (sigma). The complex is part of the protein coat on the cytoplasmic face of coated vesicles which links clathrin to receptors in vesicles. Alternative splicing of this gene results in two transcript variants encoding two different isoforms. A third transcript variant has been described, but its full length nature has not been determined.

Application Notes

Optimal dilution of the AP2A1 antibody should be determined by the researcher.

Immunogen

An E. coli-derived human protein (amino acids S785-F977) was used as the immunogen for the AP2A1 antibody.

Storage

After reconstitution, the AP2A1 antibody can be stored for up to one month at 4°C. For long-term, aliquot and store at -20°C. Avoid repeated freezing and thawing.