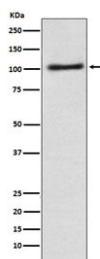


AP2A1 Antibody / Alpha 1 adaptin [clone AFDO-1] (RQ4811)

Catalog No.	Formulation	Size
RQ4811	Antibody in PBS with 0.02% sodium azide, 50% glycerol and 0.4-0.5mg/ml BSA	100 ul

[Bulk quote request](#)

Availability	1-2 weeks
Species Reactivity	Human
Format	Purified
Clonality	Rabbit Monoclonal
Isotype	Rabbit IgG
Clone Name	AFDO-1
Purity	Affinity purified
UniProt	O95782
Applications	Western Blot : 1:500-1:2000
Limitations	This AP2A1 antibody is available for research use only.



Western blot testing of human A431 cell lysate with AP2A1 antibody. Predicted molecular weight ~108 kDa.

Description

'AP-2 complex subunit alpha-1' is a component of the adaptor protein complex 2 (AP-2) . Adaptor protein complexes function in protein transport via transport vesicles in different membrane traffic pathways. Adaptor protein complexes are vesicle coat components and appear to be involved in cargo selection and vesicle formation. [UniProt]

Application Notes

Optimal dilution of the AP2A1 antibody should be determined by the researcher.

Immunogen

A synthetic peptide specific to human AP2A1 / Alpha 1 adaptin was used as the immunogen for the AP2A1 antibody.

Storage

Store the AP2A1 antibody at -20oC.