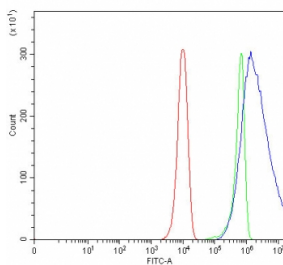


AP-B Antibody / Aminopeptidase B / RNPEP (RQ7819)

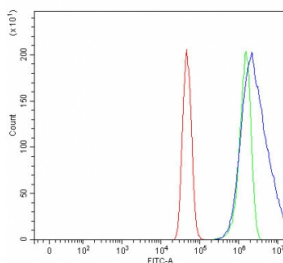
Catalog No.	Formulation	Size
RQ7819	0.5mg/ml if reconstituted with 0.2ml sterile DI water	100 ug

[Bulk quote request](#)

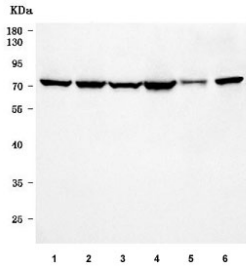
Availability	1-3 business days
Species Reactivity	Human, Mouse
Format	Antigen affinity purified
Host	Rabbit
Clonality	Polyclonal (rabbit origin)
Isotype	Rabbit IgG
Purity	Antigen affinity purified
Buffer	Lyophilized from 1X PBS with 2% Trehalose
UniProt	Q9H4A4
Applications	Western Blot : 0.5-1ug/ml Flow Cytometry : 1-3ug/million cells Direct ELISA : 0.1-0.5ug/ml
Limitations	This AP-B antibody is available for research use only.



Flow cytometry testing of human HeLa cells with AP-B antibody at 1ug/million cells (blocked with goat sera); Red=cells alone, Green=isotype control, Blue= AP-B antibody.



Flow cytometry testing of human U-251 cells with AP-B antibody at 1ug/million cells (blocked with goat sera); Red=cells alone, Green=isotype control, Blue= AP-B antibody.



Western blot testing of 1) human HeLa, 2) human A549, 3) human HepG2, 4) human SiHa, 5) mouse small intestine and 6) mouse stomach tissue lysate with AP-B antibody. Predicted molecular weight ~73 kDa.

Description

Aminopeptidase B is an enzyme that in humans is encoded by the RNPEP gene. Predicted to enable metalloaminopeptidase activity. Predicted to be involved in proteolysis. Located in extracellular exosome.

Application Notes

Optimal dilution of the AP-B antibody should be determined by the researcher.

Immunogen

E. coli-derived recombinant human protein (amino acids D66-K648) was used as the immunogen for the AP-B antibody.

Storage

After reconstitution, the AP-B antibody can be stored for up to one month at 4oC. For long-term, aliquot and store at -20oC. Avoid repeated freezing and thawing.