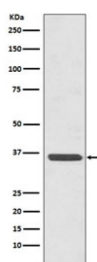


ANXA2 Antibody / Annexin A2 [clone ABDG-1] (RQ5177)

| Catalog No. | Formulation | Size |
|-------------|--|--------|
| RQ5177 | Antibody in PBS with 0.02% sodium azide, 50% glycerol and 0.4-0.5mg/ml BSA | 100 ul |

[Bulk quote request](#)

| | |
|--------------------|---|
| Availability | 1-2 weeks |
| Species Reactivity | Human |
| Format | Purified |
| Clonality | Rabbit Monoclonal |
| Isotype | Rabbit IgG |
| Clone Name | ABDG-1 |
| Purity | Affinity purified |
| UniProt | P07355 |
| Applications | Western Blot : 1:500-1:2000 |
| Limitations | This ANXA2 antibody is available for research use only. |



Western blot testing of human HeLa cell lysate with ANXA2 antibody. Predicted molecular weight ~38 kDa.

Description

This gene encodes a member of the annexin family. Members of this calcium-dependent phospholipid-binding protein family play a role in the regulation of cellular growth and in signal transduction pathways. This protein functions as an autocrine factor which heightens osteoclast formation and bone resorption. [RefSeq]

Application Notes

Optimal dilution of the ANXA2 antibody should be determined by the researcher.

Immunogen

A synthetic peptide specific to human Annexin A2 / ANXA2 was used as the immunogen for the ANXA2 antibody.

Storage

Store the ANXA2 antibody at -20oC.