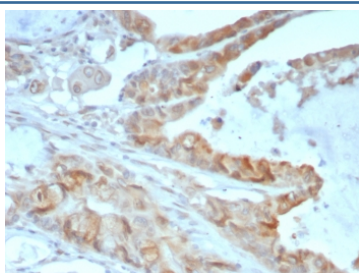


ANXA2 Antibody / Annexin A2 [clone 3D5/4] (V4388)

Catalog No.	Formulation	Size
V4388-100UG	0.2 mg/ml in 1X PBS with 0.1 mg/ml BSA (US sourced), 0.05% sodium azide	100 ug
V4388-20UG	0.2 mg/ml in 1X PBS with 0.1 mg/ml BSA (US sourced), 0.05% sodium azide	20 ug
V4388SAF-100UG	1 mg/ml in 1X PBS; BSA free, sodium azide free	100 ug

[Bulk quote request](#)

Availability	1-3 business days
Species Reactivity	Human
Format	Purified
Host	Mouse
Clonality	Monoclonal (mouse origin)
Isotype	Mouse IgG2a, kappa
Clone Name	3D5/4
Purity	Protein A/G affinity
UniProt	P07355
Localization	Secreted, Cytoplasm (Melanosome)
Applications	Immunohistochemistry (FFPE) : 1-2ug/ml for 30 minutes at RT
Limitations	This ANXA2 antibody is available for research use only.



IHC staining of FFPE human colon cancer tissue with ANXA2 antibody (clone 3D5/4).
HIER: boil tissue sections in pH 9 10mM Tris with 1mM EDTA for 20 min and allow to cool before testing.

Description

The Annexin family of calcium-binding proteins is composed of at least ten mammalian genes and is characterized by a conserved core domain which binds phospholipids in a Ca²⁺-dependent manner and a unique amino-terminal region

which may confer binding specificity. The interaction between these proteins and biological membranes has led to the hypothesis that they are involved in cellular trafficking processes such as endocytosis, exocytosis and cellular adhesion. Annexin I, alternatively referred to as lipocortin, has been implicated as a mediator of the anti-inflammatory response produced by glucocorticoids and as an inhibitor of cPLA2, a potent mediator of inflammation. Annexin II, also called p36, exists as a monomer or as a heterotetramer, complexed with the S-100-related protein p11. This complex is termed Calpactin I. In the tetrameric form, Annexin II is an efficient substrate of PKC family and Src pp60.

Application Notes

Optimal dilution of the ANXA2 antibody should be determined by the researcher.

Immunogen

Recombinant full-length human protein was used as the immunogen for the ANXA2 antibody.

Storage

Aliquot the ANXA2 antibody and store frozen at -20oC or colder. Avoid repeated freeze-thaw cycles.