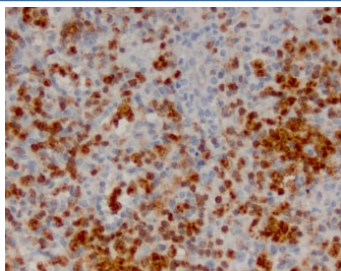


ANXA1 Antibody / Annexin A1 [clone ANNX1-1] (V7635)

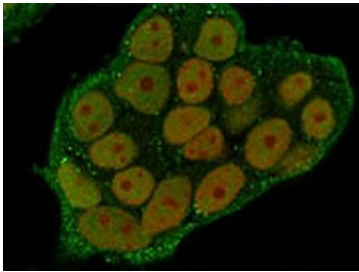
Catalog No.	Formulation	Size
V7635-100UG	0.2 mg/ml in 1X PBS with 0.1 mg/ml BSA (US sourced) and 0.05% sodium azide	100 ug
V7635-20UG	0.2 mg/ml in 1X PBS with 0.1 mg/ml BSA (US sourced) and 0.05% sodium azide	20 ug
V7635SAF-100UG	1 mg/ml in 1X PBS; BSA free, sodium azide free	100 ug

Bulk quote request

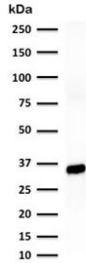
Availability	1-3 business days
Species Reactivity	Human
Format	Purified
Clonality	Monoclonal (mouse origin)
Isotype	Mouse IgG2a, kappa
Clone Name	ANNX1-1
Purity	Protein G affinity chromatography
UniProt	P04083
Localization	Cell surface, cytoplasmic, nuclear
Applications	Immunohistochemistry (FFPE) : 1-2ug/ml Immunofluorescence : 1-2ug/ml Western Blot : 1-2ug/ml
Limitations	This ANXA1 antibody is available for research use only.



IHC staining of FFPE human lymph node with ANXA1 antibody (clone ANNX1-1). HIER: boil tissue sections in pH 9 10mM Tris with 1mM EDTA for 10-20 min and allow to cool before testing.



Immunofluorescent staining of PFA-fixed human HeLa cells with ANXA1 antibody (green, clone ANNX1-1) and Reddot nuclear stain (red).



Western blot testing of human A549 cell lysate with ANXA1 antibody (clone ANNX1-1). Predicted molecular weight ~38 kDa.

Description

Annexin A1 plays important roles in the innate immune response as effector of glucocorticoid-mediated responses and regulator of the inflammatory process.

Application Notes

Optimal dilution of the ANXA1 antibody should be determined by the researcher.

Immunogen

Recombinant full-length human Annexin A1 protein was used as the immunogen for the ANXA1 antibody.

Storage

Store the ANXA1 antibody at 2-8°C (with azide) or aliquot and store at -20°C or colder (without azide).