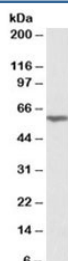


ANTXR2 Antibody (R34172)

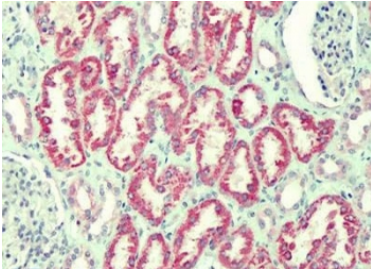
Catalog No.	Formulation	Size
R34172-100UG	0.5 mg/ml in 1X TBS, pH7.3, with 0.5% BSA (US sourced) and 0.02% sodium azide	100 ug

[Bulk quote request](#)

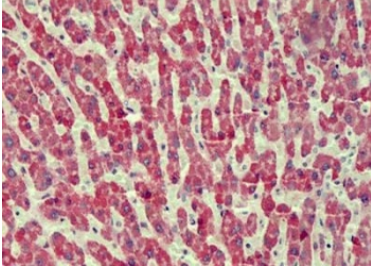
Availability	1-3 business days
Species Reactivity	Human, Mouse, Rat
Predicted Reactivity	Dog, Cow
Format	Antigen affinity purified
Clonality	Polyclonal (goat origin)
Isotype	Goat Ig
Purity	Antigen affinity
Gene ID	118429
Localization	Membrane, secreted
Applications	Western Blot : 0.3-1ug/ml IHC (FFPE) : 2.5ug/ml ELISA (peptide) LOD : 1:16000
Limitations	This ANTXR2 antibody is available for research use only.



Western blot testing of mouse kidney lysate with ANTXR2 antibody at 0.3ug/ml.
Predicted molecular weight: ~54 kDa.



IHC testing of FFPE human kidney tissue with ANT XR2 antibody at 2.5ug/ml. Required HIER: steamed antigen retrieval with pH6 citrate buffer; AP-staining.



IHC testing of FFPE human liver tissue with ANT XR2 antibody at 2.5ug/ml. Required HIER: steamed antigen retrieval with pH6 citrate buffer; AP-staining.

Description

Additional name(s) for this target protein: Anthrax toxin receptor 2

Application Notes

Optimal dilution of the ANT XR2 antibody should be determined by the researcher.

Immunogen

Amino acids HEGLKLANEQIQK were used as the immunogen for this ANT XR2 antibody.

Storage

Aliquot and store the ANT XR2 antibody at -20oC.