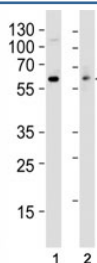


Anti-Src Antibody [clone 17AT28] (F40418)

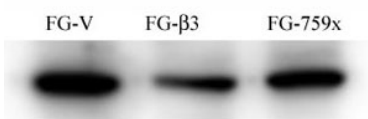
Catalog No.	Formulation	Size
F40418-0.4ML	In 1X PBS, pH 7.4, with 0.09% sodium azide	0.4 ml
F40418-0.08ML	In 1X PBS, pH 7.4, with 0.09% sodium azide	0.08 ml

[Bulk quote request](#)

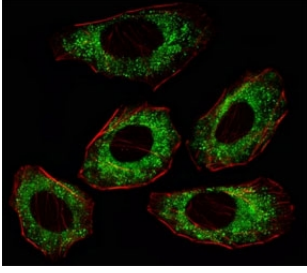
Availability	1-3 business days
Species Reactivity	Human, Mouse
Format	Purified
Host	Mouse
Clonality	Monoclonal (mouse origin)
Isotype	Mouse IgG1
Clone Name	17AT28
Purity	Purified
UniProt	P12931
Applications	Immunofluorescence : 1:10-1:50 Western Blot : 1:100-1000
Limitations	This anti-Src antibody is available for research use only.



Western blot analysis of lysate from (1) HT29 and (2) Jurkat cell line using anti-Src antibody at 1:1000.



FG Pancreatic Carcinoma Cell Lines stably expressing vector along (FG-V) the b3 integrin subunit (FG-β3) or a b3 truncation mutant (FG-759x). Src antibody was diluted 1:500 and incubated overnight at 40C. Data and protocol kindly provided by Dr. Weis of Cheresch Lab, UCSD.



Fluorescent image of A549 cell stained with anti-Src antibody at 1:25. Immunoreactivity is localized to the cytoplasm.

Description

This gene is highly similar to the v-src gene of Rous sarcoma virus. This proto-oncogene may play a role in the regulation of embryonic development and cell growth. The protein encoded by this gene is a tyrosine-protein kinase whose activity can be inhibited by phosphorylation by c-Src kinase. Mutations in this gene could be involved in the malignant progression of colon cancer. Two transcript variants encoding the same protein have been found for this gene.

Application Notes

Titration of the anti-Src antibody may be required due to differences in protocols and secondary/substrate sensitivity.

Immunogen

This anti-Src antibody was produced from a mouse immunized with a full length recombinant human protein.

Storage

Aliquot the anti-Src antibody and store frozen at -20oC or colder. Avoid repeated freeze-thaw cycles.