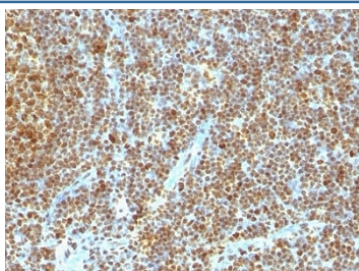


Anti-PCNA Antibody [clone SPM350] (V9064)

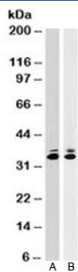
Catalog No.	Formulation	Size
V9064-100UG	0.2 mg/ml in 1X PBS with 0.1 mg/ml BSA (US sourced) and 0.05% sodium azide	100 ug
V9064-20UG	0.2 mg/ml in 1X PBS with 0.1 mg/ml BSA (US sourced) and 0.05% sodium azide	20 ug
V9064SAF-100UG	1 mg/ml in 1X PBS; BSA free, sodium azide free	100 ug
V9064IHC-7ML	Prediluted in 1X PBS with 0.1 mg/ml BSA (US sourced) and 0.05% sodium azide; *For IHC use only*	7 ml

Bulk quote request

Availability	1-3 business days
Species Reactivity	Human
Format	Purified
Clonality	Monoclonal (mouse origin)
Isotype	Mouse IgG2a, kappa
Clone Name	SPM350
Purity	Protein G affinity chromatography
UniProt	P12004
Localization	Predominantly nuclear, some cytoplasmic
Applications	Western Blot : 1-2ug/ml Immunohistochemistry (FFPE) : 1-2ug/ml for 30 min at RT
Limitations	This anti-PCNA antibody is available for research use only.



IHC analysis of formalin-fixed, paraffin-embedded human tonsil stained with anti-PCNA antibody (clone SPM350).



Western blot testing of A) human HeLa and B) mouse NIH3T3 cell lysates with anti-PCNA antibody (clone SPM350). Predicted molecular weight ~29 kDa, routinely observed at 29~36 kDa.

Description

Recognizes a non-histone protein of 36kDa, which is identified as proliferating cell nuclear antigen (PCNA). It is also known as cyclin or polymerase delta auxiliary protein. Elevated expression of PCNA/cyclin has been shown in the nucleus during late G1 phase immediately before the onset of DNA synthesis, becoming maximal during S-phase and declining during G2 and M phases.

Application Notes

The optimal dilution of the anti-PCNA antibody for each application should be determined by the researcher.

1. Staining of formalin-fixed tissues requires boiling tissue sections in pH 9 10mM Tris with 1mM EDTA for 10-20 min followed by cooling at RT for 20 minutes.
2. The prediluted format is supplied in a dropper bottle and is optimized for use in IHC. After epitope retrieval step (if required), drip mAb solution onto the tissue section and incubate at RT for 30 min.

Immunogen

Rat PCNA protein was used as the immunogen for this anti-PCNA antibody.

Storage

Store the anti-PCNA antibody at 2-8°C (with azide) or aliquot and store at -20°C or colder (without azide).