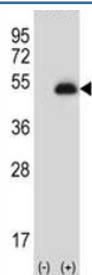


Anti-PAX6 Antibody (F42570)

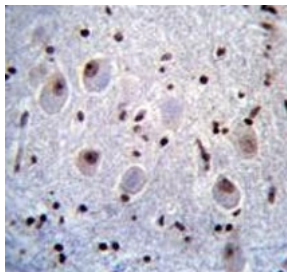
Catalog No.	Formulation	Size
F42570-0.4ML	In 1X PBS, pH 7.4, with 0.09% sodium azide	0.4 ml
F42570-0.08ML	In 1X PBS, pH 7.4, with 0.09% sodium azide	0.08 ml

[Bulk quote request](#)

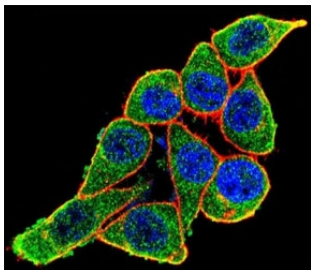
Availability	1-3 business days
Species Reactivity	Human
Format	Antigen affinity purified
Host	Rabbit
Clonality	Polyclonal (rabbit origin)
Isotype	Rabbit Ig
Purity	Antigen affinity
UniProt	P26367
Localization	Nuclear, cytoplasmic
Applications	Western Blot : 1:1000 IHC (Paraffin) : 1:10-1:50 Immunofluorescence : 1:10-1:50
Limitations	This anti-PAX6 antibody is available for research use only.



Western blot analysis of anti-PAX6 antibody and 293 cell lysate (2 ug/lane) either nontransfected (Lane 1) or transiently transfected (2) with the PAX6 gene. Predicted molecular weight ~48kDa.



Anti-PAX6 antibody immunohistochemistry analysis in formalin fixed and paraffin embedded human brain tissue



Confocal immunofluorescent analysis of anti-PAX6 antibody with HeLa cells followed by Alexa Fluor 488-conjugated goat anti-rabbit IgG (green). Actin filaments have been labeled with Alexa Fluor 555 Phalloidin (red). DAPI was used as a nuclear counterstain (blue).

Description

This gene encodes paired box gene 6, one of many human homologs of the *Drosophila melanogaster* gene *prd*. In addition to the hallmark feature of this gene family, a conserved paired box domain, the encoded protein also contains a homeo box domain. Both domains are known to bind DNA, and function as regulators of gene transcription. This gene is expressed in the developing nervous system, and in developing eyes. Mutations in this gene are known to cause ocular disorders such as aniridia and Peter's anomaly. Alternatively spliced transcript variants encoding either the same or different isoform have been found for this gene. [provided by RefSeq].

Application Notes

Titration of the anti-PAX6 antibody may be required due to differences in protocols and secondary/substrate sensitivity.

Immunogen

This anti-PAX6 antibody was produced from rabbits immunized with a recombinant protein from human PAX6.

Storage

Aliquot the anti-PAX6 antibody and store frozen at -20°C or colder. Avoid repeated freeze-thaw cycles.