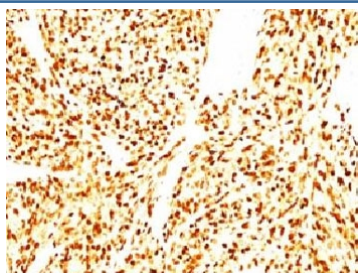


Anti-MyoD1 Antibody [clone SPM427] (V9052)

| Catalog No. | Formulation | Size |
|----------------|---|--------|
| V9052-100UG | 0.2 mg/ml in 1X PBS with 0.1 mg/ml BSA (US sourced) and 0.05% sodium azide | 100 ug |
| V9052-20UG | 0.2 mg/ml in 1X PBS with 0.1 mg/ml BSA (US sourced) and 0.05% sodium azide | 20 ug |
| V9052SAF-100UG | 1 mg/ml in 1X PBS; BSA free, sodium azide free | 100 ug |
| V9052IHC-7ML | Prediluted in 1X PBS with 0.1 mg/ml BSA (US sourced) and 0.05% sodium azide; *For IHC use only* | 7 ml |

[Bulk quote request](#)

| | |
|---------------------------|--|
| Availability | 1-3 business days |
| Species Reactivity | Human |
| Format | Purified |
| Host | Mouse |
| Clonality | Monoclonal (mouse origin) |
| Isotype | Mouse IgG1, kappa |
| Clone Name | SPM427 |
| Purity | Protein G affinity chromatography |
| UniProt | P15172 |
| Localization | Nuclear |
| Applications | Immunohistochemistry (FFPE) : 1-2ug/ml for 30 min at RT |
| Limitations | This anti-MyoD1 antibody is available for research use only. |



Formalin-fixed, paraffin-embedded human Rhabdomyosarcoma stained with anti-MyoD1 antibody (SPM427)

Description

Recognizes a phosphor-protein of 45kDa, identified as MyoD1. It does not cross react with myogenin, Myf5, or Myf6. Antibody to MyoD1 labels the nuclei of myoblasts in developing muscle tissues. MyoD1 is not detected in normal adult tissue, but is highly expressed in the tumor cell nuclei of rhabdomyosarcomas. Occasionally nuclear expression of MyoD1 is seen in ectomesenchymoma and a subset of Wilms tumors. Weak cytoplasmic staining is observed in several non-muscle tissues, including glandular epithelium and also in rhabdomyosarcomas, neuroblastomas, Ewings sarcomas and alveolar soft part sarcomas.

Application Notes

The optimal dilution of the anti-MyoD1 antibody for each application should be determined by the researcher.

1. Staining of formalin-fixed tissues requires boiling tissue sections in 10mM Tris with 1mM EDTA, pH 9, for 10-20 min followed by cooling at RT for 20 minutes.
2. The prediluted format is supplied in a dropper bottle and is optimized for use in IHC. After epitope retrieval step (if required), drip mAb solution onto the tissue section and incubate at RT for 30 min.

Immunogen

Recombinant mouse protein was used as the immunogen for this anti-MyoD1 antibody. The epitope of this mAb maps between amino acid 180-189.

Storage

Store the anti-MyoD1 antibody at 2-8oC (with azide) or aliquot and store at -20oC or colder (without azide).