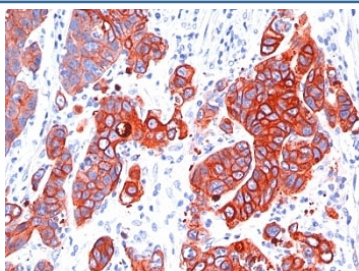


Anti-Multi-Cytokeratin Antibody [clone SPM583] (V9112)

Catalog No.	Formulation	Size
V9112-100UG	0.2 mg/ml in 1X PBS with 0.1 mg/ml BSA (US sourced) and 0.05% sodium azide	100 ug
V9112-20UG	0.2 mg/ml in 1X PBS with 0.1 mg/ml BSA (US sourced) and 0.05% sodium azide	20 ug
V9112SAF-100UG	1 mg/ml in 1X PBS; BSA free, sodium azide free	100 ug
V9112IHC-7ML	Prediluted in 1X PBS with 0.1 mg/ml BSA (US sourced) and 0.05% sodium azide; *For IHC use only*	7 ml

Bulk quote request

Availability	1-3 business days
Species Reactivity	Human
Format	Purified
Clonality	Monoclonal (mouse origin)
Isotype	Mouse IgG1, kappa
Clone Name	SPM583
Purity	Protein G affinity chromatography
UniProt	P19013, P13647, P02538, P04259, P48668, P05787, P13645, P13646, P05783
Localization	Cytoplasmic
Applications	Immunohistochemistry (FFPE) : 1-2ug/ml for 30 min at RT
Limitations	This anti-Multi-Cytokeratin antibody is available for research use only.



IHC: Formalin-fixed, paraffin-embedded human colon carcinoma stained with anti-Multi Cytokeratin antibody (SPM583).

Description

This mAb recognizes cytokeratin 4, 5, 6, 8, 10, 13, and 18. This is a broad-spectrum antibody which has been reported to differentiate epithelial tumors from non-epithelial tumors. Many studies have shown the usefulness of keratins as markers in cancer research and tumor diagnosis.

Application Notes

The optimal dilution of the anti-Multi-Cytokeratin antibody for each application should be determined by the researcher.

1. Staining of formalin-fixed tissues requires boiling tissue sections in pH 9 10mM Tris with 1mM EDTA for 10-20 min followed by cooling at RT for 20 minutes.
2. The prediluted format is supplied in a dropper bottle and is optimized for use in IHC. After epitope retrieval step (if required), drip mAb solution onto the tissue section and incubate at RT for 30 min.

Immunogen

A keratin-enriched preparation from cultured human A431 cells was used as the immunogen for this anti-Multi-Cytokeratin antibody.

Storage

Store the anti-Multi-Cytokeratin antibody at 2-8oC (with azide) or aliquot and store at -20oC or colder (without azide).