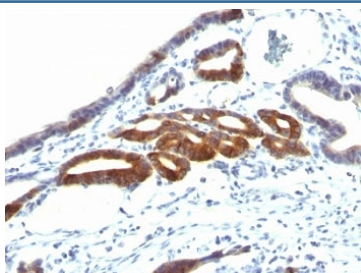


Anti-MUC6 Antibody (Gastric Mucin) [clone SPM598] (V2742)

Catalog No.	Formulation	Size
V2742-100UG	0.2 mg/ml in 1X PBS with 0.1 mg/ml BSA (US sourced) and 0.05% sodium azide	100 ug
V2742-20UG	0.2 mg/ml in 1X PBS with 0.1 mg/ml BSA (US sourced) and 0.05% sodium azide	20 ug
V2742SAF-100UG	1 mg/ml in 1X PBS; BSA free, sodium azide free	100 ug
V2742IHC-7ML	Prediluted in 1X PBS with 0.1 mg/ml BSA (US sourced) and 0.05% sodium azide; *For IHC use only*	7 ml

[Bulk quote request](#)

Availability	1-3 business days
Species Reactivity	Human
Format	Purified
Host	Mouse
Clonality	Monoclonal (mouse origin)
Isotype	Mouse IgG1, kappa
Clone Name	SPM598
Purity	Protein G affinity chromatography
UniProt	Q6W4X9
Localization	Cytoplasmic & secreted
Applications	Immunohistochemistry (FFPE) : 2-4ug/ml for 30 min at RT
Limitations	This anti-MUC6 antibody is available for research use only.



IHC: Formalin-fixed, paraffin-embedded human gastric carcinoma stained with anti-MUC6 antibody (SPM598).

Description

The MUC6 gastric mucin is a secreted glycoprotein that plays an essential role in epithelial cyto-protection from acid, proteases, pathogenic microorganisms, and mechanical trauma in the gastrointestinal tract. Mucin 6 expression is highest in the stomach and gall bladder, with lower expression in the terminal ileum and right colon. In gastric cancer, Mucin 6 has an altered expression. In normal stomach, Mucin 6 is associated with Lewis type 2; Mucin 6 is also expressed in gastric metaplasia, duodenum and pancreas. Mucin 6 is a secretory mucin, located in the deeper mucosal folds of human gall bladder, and its expression is altered with increasing degrees of inflammation.

Application Notes

Optimal dilution of the anti-MUC6 antibody should be determined by the researcher.

1. Staining of formalin-fixed tissues requires boiling tissue sections in pH 9 10mM Tris with 1mM EDTA for 10-20 min followed by cooling at RT for 20 min
2. The prediluted format is supplied in a dropper bottle and is optimized for use in IHC. After epitope retrieval step (if required), drip mAb solution onto the tissue section and incubate at RT for 30 min.

Immunogen

A synthetic peptide of the gastric Mucin 6 tandem repeat sequence was used as the immunogen for the anti-MUC6 antibody.

Storage

Store the anti-MUC6 antibody at 2-8oC (with azide) or aliquot and store at -20oC or colder (without azide).