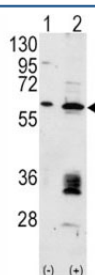


## Anti-MDM2 Antibody (F42277)

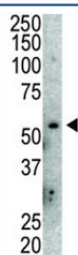
Catalog No.	Formulation	Size
F42277-0.2ML	In 1X PBS, pH 7.4, with 0.09% sodium azide	0.2 ml
F42277-0.05ML	In 1X PBS, pH 7.4, with 0.09% sodium azide	0.05 ml

[Bulk quote request](#)

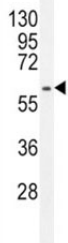
<b>Availability</b>	1-3 business days
<b>Species Reactivity</b>	Human, Mouse
<b>Format</b>	Purified
<b>Host</b>	Rabbit
<b>Clonality</b>	Polyclonal (rabbit origin)
<b>Isotype</b>	Rabbit Ig
<b>Purity</b>	Purified
<b>UniProt</b>	Q00987
<b>Applications</b>	Western Blot : 1:1000 IHC (Paraffin) : 1:10-1:50
<b>Limitations</b>	This anti-MDM2 antibody is available for research use only.



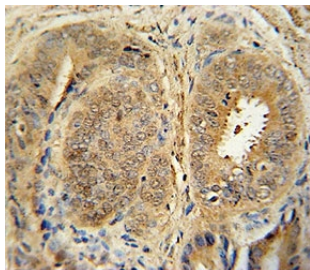
Western blot analysis of anti-MDM2 antibody and 293 cell lysate (2 ug/lane) either nontransfected (Lane 1) or transiently transfected with the MDM2 gene (2).



Western blot analysis of anti-MDM2 antibody and mouse lung tissue lysate. Predicted molecular weight: ~55 kDa but can be observed at up to ~90 kDa.



Anti-MDM2 antibody western blot analysis in HepG2 lysate. Predicted molecular weight: ~55 kDa but can be observed at up to ~90 kDa.



Anti-MDM2 antibody immunohistochemistry analysis in formalin fixed and paraffin embedded human prostate cancer.

## Description

MDM2 is a target of the transcription factor tumor protein p53. The encoded protein is a nuclear phosphoprotein that binds and inhibits transactivation by tumor protein p53, as part of an autoregulatory negative feedback loop. Overexpression of MDM2 can result in excessive inactivation of tumor protein p53, diminishing its tumor suppressor function. This protein has E3 ubiquitin ligase activity, which targets tumor protein p53 for proteasomal degradation. This protein also affects the cell cycle, apoptosis, and tumorigenesis through interactions with other proteins, including retinoblastoma 1 and ribosomal protein L5.

## Application Notes

Titration of the anti-MDM2 antibody may be required due to differences in protocols and secondary/substrate sensitivity.

## Immunogen

A portion of amino acids 393-424 from the human protein was used as the immunogen for this anti-MDM2 antibody.

## Storage

Aliquot the anti-MDM2 antibody and store frozen at -20°C or colder. Avoid repeated freeze-thaw cycles.