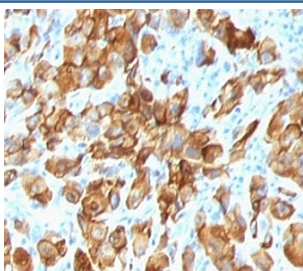


Anti-MART-1 Antibody [clone SPM540] (V9018)

Catalog No.	Formulation	Size
V9018-100UG	0.2 mg/ml in 1X PBS with 0.1 mg/ml BSA (US sourced) and 0.05% sodium azide	100 ug
V9018-20UG	0.2 mg/ml in 1X PBS with 0.1 mg/ml BSA (US sourced) and 0.05% sodium azide	20 ug
V9018SAF-100UG	1 mg/ml in 1X PBS; BSA free, sodium azide free	100 ug
V9018IHC-7ML	Prediluted in 1X PBS with 0.1 mg/ml BSA (US sourced) and 0.05% sodium azide; *For IHC use only*	7 ml

[Bulk quote request](#)

Availability	1-3 business days
Species Reactivity	Human
Format	Purified
Host	Mouse
Clonality	Monoclonal (mouse origin)
Isotype	Mouse IgG2b, kappa
Clone Name	SPM540
Purity	Protein G affinity chromatography
UniProt	Q16655
Localization	Cytoplasmic
Applications	Immunohistochemistry (FFPE) : 1-2ug/ml for 30 min at RT
Limitations	This anti-MART-1 antibody is available for research use only.



IHC: Formalin-fixed, paraffin-embedded human melanoma stained with anti-MART-1 antibody (SPM540).

Description

Melan-A/MART-1 is a melanocyte differentiation antigen recognized by autologous cytotoxic T lymphocytes. Seven other melanoma associated antigens recognized by autologous cytotoxic T cells include MAGE-1, MAGE-3, tyrosinase, gp100, gp75, BAGE-1, and GAGE-1. Subcellular fractionation shows that MART-1 is present in melanosomes and endoplasmic reticulum. This mAb labels melanomas and other tumors showing melanocytic differentiation. It is also a useful positive-marker for angiomyolipomas. It does not stain tumor cells of epithelial, lymphoid, glial, or mesenchymal origin.

Explore our [Melan-A Antibody / Melanocyte Lineage Marker clone A103 page](#) for additional validation data and research applications involving melanoma biology, melanocytic tumor identification, and pigment cell differentiation pathways.

Application Notes

The optimal dilution of the anti-MART-1 antibody for each application should be determined by the researcher.

1. Staining of formalin-fixed tissues is enhanced by boiling tissue sections in pH 9 10mM Tris with 1mM EDTA for 10-20 min followed by cooling at RT for 20 minutes.
2. The prediluted format is supplied in a dropper bottle and is optimized for use in IHC. After epitope retrieval step (if required), drip mAb solution onto the tissue section and incubate at RT for 30 min.

Immunogen

Recombinant human protein was used as the immunogen for this anti-MART-1 antibody.

Storage

Store the anti-MART-1 antibody at 2-8oC (with azide) or aliquot and store at -20oC or colder (without azide).