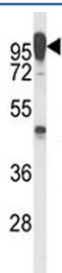


## Anti-LAMP2 Antibody (F46338)

Catalog No.	Formulation	Size
F46338-0.4ML	In 1X PBS, pH 7.4, with 0.09% sodium azide	0.4 ml
F46338-0.08ML	In 1X PBS, pH 7.4, with 0.09% sodium azide	0.08 ml

[Bulk quote request](#)

<b>Availability</b>	1-3 business days
<b>Species Reactivity</b>	Human
<b>Format</b>	Antigen affinity purified
<b>Host</b>	Rabbit
<b>Clonality</b>	Polyclonal (rabbit origin)
<b>Isotype</b>	Rabbit Ig
<b>Purity</b>	Antigen affinity
<b>UniProt</b>	P13473
<b>Applications</b>	Western Blot : 1:1000
<b>Limitations</b>	This anti-LAMP2 antibody is available for research use only.



Western blot analysis of anti-LAMP2 antibody and T47D lysate. The protein can be extensively glycosylated and visualized from 45~110 kDa.

## Description

LAMP2 is a member of a family of membrane glycoproteins. This glycoprotein provides selectins with carbohydrate ligands. It may play a role in tumor cell metastasis. It may also function in the protection, maintenance, and adhesion of the lysosome. [Wiki]

## Application Notes

Titration of the anti-LAMP2 antibody may be required due to differences in protocols and secondary/substrate sensitivity.

## **Immunogen**

This anti-LAMP2 antibody was produced from rabbits immunized with LAMP2 recombinant protein.

## **Storage**

Aliquot the anti-LAMP2 antibody and store frozen at -20oC or colder. Avoid repeated freeze-thaw cycles.