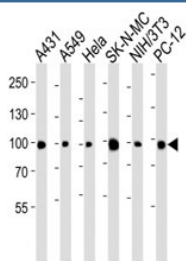


## Anti-HSP90 Antibody / HSP90AA1 (F52566)

Catalog No.	Formulation	Size
F52566-0.4ML	In 1X PBS, pH 7.4, with 0.09% sodium azide	0.4 ml
F52566-0.08ML	In 1X PBS, pH 7.4, with 0.09% sodium azide	0.08 ml

[Bulk quote request](#)

<b>Availability</b>	1-3 business days
<b>Species Reactivity</b>	Human, Mouse, Rat
<b>Predicted Reactivity</b>	Bovine, Chicken, Drosophila, Hamster, Pig, Primate, Rabbit, Zebrafish
<b>Format</b>	Antigen affinity purified
<b>Clonality</b>	Polyclonal (rabbit origin)
<b>Isotype</b>	Rabbit Ig
<b>Purity</b>	Antigen affinity
<b>UniProt</b>	P07900
<b>Applications</b>	Western Blot : 1:1000
<b>Limitations</b>	This anti-HSP90 antibody is available for research use only.



Western blot analysis of lysate from A431, A549, HeLa, SK-N-MC, mouse NIH3T3, rat PC-12 cell line using anti-HSP90 antibody diluted at 1:1000 for each lane.

## Description

HSP90 (heat shock protein 90) is a chaperone protein that assists other proteins to fold properly, stabilizes proteins against heat stress, and aids in protein degradation. It also stabilizes a number of proteins required for tumor growth, which is why HSP90 inhibitors are investigated as anti-cancer drugs. [Wiki]

## Application Notes

Titration of the anti-HSP90 antibody may be required due to differences in protocols and secondary/substrate sensitivity.

## Immunogen

This anti-HSP90 antibody was produced from a rabbit immunized with a KLH conjugated synthetic peptide between 57-89 amino acids from the N-terminal region of human HSP90AA1.

## Storage

Aliquot the anti-HSP90 antibody and store frozen at -20oC or colder. Avoid repeated freeze-thaw cycles.