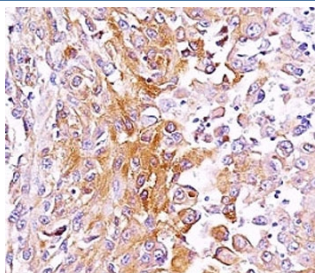


Anti-gp100 Antibody / PMEL17 [clone SPM286] (V9079)

Catalog No.	Formulation	Size
V9079-100UG	0.2 mg/ml in 1X PBS with 0.1 mg/ml BSA (US sourced) and 0.05% sodium azide	100 ug
V9079-20UG	0.2 mg/ml in 1X PBS with 0.1 mg/ml BSA (US sourced) and 0.05% sodium azide	20 ug
V9079SAF-100UG	1 mg/ml in 1X PBS; BSA free, sodium azide free	100 ug

[Bulk quote request](#)

Availability	1-3 business days
Species Reactivity	Human
Format	Purified
Host	Mouse
Clonality	Monoclonal (mouse origin)
Isotype	Mouse IgG2b, kappa
Clone Name	SPM286
Purity	Protein G affinity chromatography
UniProt	P40967
Localization	Cytoplasmic
Applications	Immunohistochemistry (FFPE) : 1-2ug/ml for 30 min at RT
Limitations	This anti-gp100 antibody is available for research use only.



IHC: Formalin-fixed, paraffin-embedded human melanoma stained with anti-gp100 antibody (SPM286).

Description

By immunohistochemistry, it specifically recognizes a protein in melanocytes and melanomas. This mAb reacts with junctional and blue nevus cells and variably with fetal and neonatal melanocytes. Intradermal nevi, normal adult melanocytes, and non-melanocytic cells are negative. It does not stain tumor cells of epithelial, lymphoid, glial, or mesenchymal origin. This Mab labels formalin-fixed, paraffin-embedded melanomas and other tumors showing melanocytic differentiation.

Application Notes

The optimal dilution of the anti-gp100 antibody for each application should be determined by the researcher.

1. Staining of formalin-fixed tissues requires boiling tissue sections in pH 9 10mM Tris with 1mM EDTA for 10-20 min followed by cooling at RT for 20 minutes.

Immunogen

Membranes from a human melanoma metastasis were used as the immunogen for this anti-gp100 antibody.

Storage

Store the anti-gp100 antibody at 2-8°C (with azide) or aliquot and store at -20°C or colder (without azide).