

Anti-EpCAM Antibody (F49189)

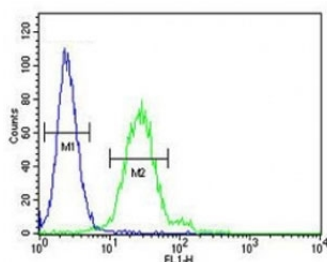
Catalog No.	Formulation	Size
F49189-0.4ML	In 1X PBS, pH 7.4, with 0.09% sodium azide	0.4 ml
F49189-0.08ML	In 1X PBS, pH 7.4, with 0.09% sodium azide	0.08 ml

[Bulk quote request](#)

Availability	1-3 business days
Species Reactivity	Human
Format	Antigen affinity purified
Host	Rabbit
Clonality	Polyclonal (rabbit origin)
Isotype	Rabbit Ig
Purity	Antigen affinity
UniProt	P16422
Applications	Western Blot : 1:1000 Flow Cytometry : 1:10-1:50
Limitations	This anti-EpCAM antibody is available for research use only.

95
72
55
36
28
17

Anti-EpCAM antibody western blot analysis in 293 lysate. Expected molecular weight: ~35 kDa (unmodified), 40-43 kDa (glycosylated).



Anti-EpCAM antibody flow cytometric analysis of 293 cells (right histogram) compared to a negative control cell (left histogram). FITC-conjugated goat-anti-rabbit secondary Ab was used for the analysis.

Description

EpCAM is a carcinoma-associated antigen and is a member of a family that includes at least two type I membrane proteins. This antigen is expressed on most normal epithelial cells and gastrointestinal carcinomas and functions as a homotypic calcium-independent cell adhesion molecule. The antigen is being used as a target for immunotherapy treatment of human carcinomas.

Application Notes

Titration of the anti-EpCAM antibody may be required due to differences in protocols and secondary/substrate sensitivity.

Immunogen

A portion of amino acids 57-85 from the human protein was used as the immunogen for this anti-EpCAM antibody.

Storage

Aliquot the anti-EpCAM antibody and store frozen at -20oC or colder. Avoid repeated freeze-thaw cycles.