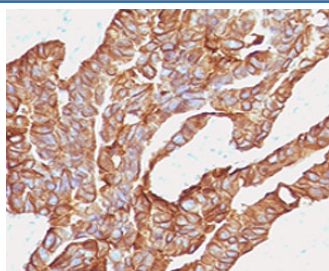


## Anti-EpCAM Antibody (Extracellular domain) [clone EPM17-2] (V7241)

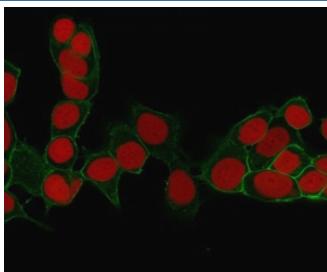
Catalog No.	Formulation	Size
V7241-100UG	0.2 mg/ml in 1X PBS with 0.1 mg/ml BSA (US sourced) and 0.05% sodium azide	100 ug
V7241-20UG	0.2 mg/ml in 1X PBS with 0.1 mg/ml BSA (US sourced) and 0.05% sodium azide	20 ug
V7241SAF-100UG	1 mg/ml in 1X PBS; BSA free, sodium azide free	100 ug

[Bulk quote request](#)

<b>Species Reactivity</b>	Human
<b>Format</b>	Purified
<b>Host</b>	Mouse
<b>Clonality</b>	Monoclonal (mouse origin)
<b>Isotype</b>	Mouse IgG1, kappa
<b>Clone Name</b>	EPM17-2
<b>Purity</b>	Protein G affinity chromatography
<b>Buffer</b>	1X PBS, pH 7.4
<b>UniProt</b>	P16422
<b>Localization</b>	Cell surface, cytoplasmic
<b>Applications</b>	Western Blot : 1-2ug/ml Immunofluorescence : 1-2ug/ml Immunohistochemistry (FFPE) : 1-2ug/ml for 30 min at RT (1)
<b>Limitations</b>	This anti-EpCAM antibody is available for research use only.



IHC testing of human colorectal carcinoma with anti-EpCAM antibody (clone EPM17-2). Staining of FFPE tissue requires boiling sections in pH 9 10mM Tris with 1mM EDTA for 10-20 min followed by cooling at RT for 20 min.



Immunofluorescent staining of human MCF-7 cells with EpCAM antibody (green, clone EPM17-2) and Reddot nuclear stain (red).



Western blot testing of human HCT116 cell lysate with EpCAM antibody (clone EPM17-2). Expected molecular weight: ~35 kDa (unmodified), 40-43 kDa (glycosylated).

## Description

EpCAM may act as a physical homophilic interaction molecule between intestinal epithelial cells (IECs) and intraepithelial lymphocytes (IELs) at the mucosal epithelium for providing immunological barrier as a first line of defense against mucosal infection. [UniProt]

## Application Notes

The concentration stated for each application is a general starting point. Variations in protocols, secondaries and substrates may require the anti-EpCAM antibody to be titrated up or down for optimal performance.

## Immunogen

Human partial recombinant protein (extracellular portion) was used as the immunogen for this anti-EpCAM antibody.

## Storage

Store the anti-EpCAM antibody at 2-8°C (with azide) or aliquot and store at -20°C or colder (without azide).

## References (2)