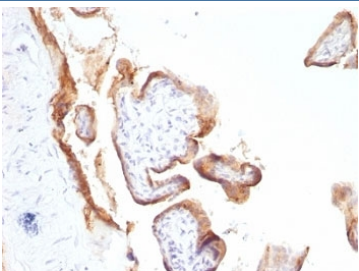


Anti-EGFR Antibody [clone SPM622] (V2486)

Catalog No.	Formulation	Size
V2486-100UG	0.2 mg/ml in 1X PBS with 0.1 mg/ml BSA (US sourced) and 0.05% sodium azide	100 ug
V2486-20UG	0.2 mg/ml in 1X PBS with 0.1 mg/ml BSA (US sourced) and 0.05% sodium azide	20 ug
V2486SAF-100UG	1 mg/ml in 1X PBS; BSA free, sodium azide free	100 ug
V2486IHC-7ML	Prediluted in 1X PBS with 0.1 mg/ml BSA (US sourced) and 0.05% sodium azide; *For IHC use only*	7 ml

Bulk quote request

Availability	1-3 business days
Species Reactivity	Human
Format	Purified
Host	Mouse
Clonality	Monoclonal (mouse origin)
Isotype	Mouse IgG2a, kappa
Clone Name	SPM622
Purity	Protein G affinity chromatography
UniProt	P00533
Localization	Cell surface
Applications	Immunohistochemistry (FFPE) : 2-4ug/ml for 30 min at RT
Limitations	This anti-EGFR antibody is available for research use only.



IHC: Formalin-fixed, paraffin-embedded human placenta stained with anti-EGFR antibody (SPM622).

Description

This mAb recognizes a protein of 170kDa, identified as EGFR. EGFR is type I receptor tyrosine kinase with sequence homology to erbB-1, -2, -3 -4 or HER-1, -2, -3 -4. It binds to Epidermal Growth Factor (EGF), Transforming Growth Factor- α (TGF- α), Heparin-binding EGF (HB-EGF), amphiregulin, betacellulin and epiregulin. EGFR is overexpressed in tumors of breast, brain, bladder, lung, gastric, head & neck, esophagus, cervix, vulva, ovary, and endometrium. It is predominantly present in squamous cell carcinomas.

Explore our [EGFR Antibody \(31G7\)](#) page for a broader view of EGFR expression and extensively validated antibody performance across applications.

Application Notes

Optimal dilution of the anti-EGFR antibody should be determined by the researcher.

1. Digest formalin-fixed tissues with Protease at 1mg/ml PBS, pH 7.4 for 10 min at 37oC
2. The prediluted format is supplied in a dropper bottle and is optimized for use in IHC. After epitope retrieval step (if required), drip mAb solution onto the tissue section and incubate at RT for 30 min.

Immunogen

Human EGFR purified from A431 cells was used as the immunogen for the anti-EGFR antibody.

Storage

Store the anti-EGFR antibody at 2-8oC (with azide) or aliquot and store at -20oC or colder (without azide).