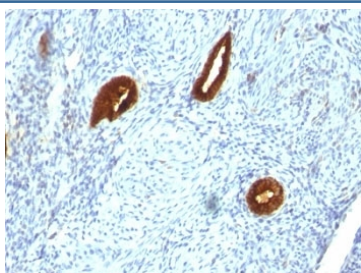


Anti-CK19 Antibody [clone SPM266] (V9126)

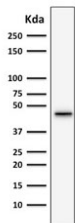
Catalog No.	Formulation	Size
V9126-100UG	0.2 mg/ml in 1X PBS with 0.1 mg/ml BSA (US sourced) and 0.05% sodium azide	100 ug
V9126-20UG	0.2 mg/ml in 1X PBS with 0.1 mg/ml BSA (US sourced) and 0.05% sodium azide	20 ug
V9126SAF-100UG	1 mg/ml in 1X PBS; BSA free, sodium azide free	100 ug

[Bulk quote request](#)

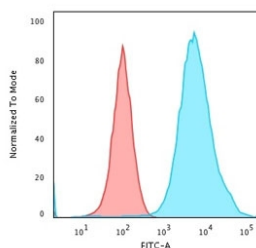
Availability	1-3 business days
Species Reactivity	Human
Format	Purified
Host	Mouse
Clonality	Monoclonal (mouse origin)
Isotype	Mouse IgG2a, lambda
Clone Name	SPM266
Purity	Protein G affinity chromatography
UniProt	P08727
Localization	Cytoplasmic
Applications	Flow Cytometry : 1-2ug/10 ⁶ cells Immunofluorescence : 1-2ug/ml Western Blot : 1-2ug/ml Immunohistochemistry (FFPE) : 1-2ug/ml for 30 min at RT
Limitations	This anti-CK19 antibody is available for research use only.



IHC analysis of formalin-fixed, paraffin-embedded human endometrial carcinoma stained with anti-CK19 antibody (clone SPM266).



Western blot testing of human HepG2 lysate with anti-CK19 antibody (clone SPM266).



FACS staining of methanol-fixed human MCF7 cells with anti-CK19 antibody (red, clone SPM266) and isotype control (blue).

Description

CK19 is expressed in sweat gland, mammary gland ductal and secretory cells, bile ducts, gastrointestinal tract, bladder urothelium, oral epithelia, esophagus, and ectocervical epithelium. Anti-CK19 reacts with a wide variety of epithelial malignancies including adenocarcinomas of the colon, stomach, pancreas, biliary tract, liver, and breast.

Application Notes

The optimal dilution of the anti-CK19 antibody for each application should be determined by the researcher.

1. Staining of formalin-fixed tissues requires boiling tissue sections in 10mM Citrate Buffer, pH 6.0, for 10-20 min followed by cooling at RT for 20 minutes.
2. The prediluted format is supplied in a dropper bottle and is optimized for use in IHC. After epitope retrieval step (if required), drip mAb solution onto the tissue section and incubate at RT for 30 min.

Immunogen

The human breast cancer cell line MCF-7 was used as the immunogen for this anti-CK19 antibody. Its epitope maps between amino acids 312-335.

Storage

Store the anti-CK19 antibody at 2-8oC (with azide) or aliquot and store at -20oC or colder (without azide).