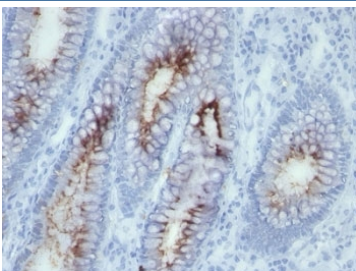


Anti-CEA Antibody / CEACAM5 [clone SPM506] (V2447)

Catalog No.	Formulation	Size
V2447-100UG	0.2 mg/ml in 1X PBS with 0.1 mg/ml BSA (US sourced) and 0.05% sodium azide	100 ug
V2447-20UG	0.2 mg/ml in 1X PBS with 0.1 mg/ml BSA (US sourced) and 0.05% sodium azide	20 ug
V2447SAF-100UG	1 mg/ml in 1X PBS; BSA free, sodium azide free	100 ug
V2447IHC-7ML	Prediluted in 1X PBS with 0.1 mg/ml BSA (US sourced) and 0.05% sodium azide; *For IHC use only*	7 ml

[Bulk quote request](#)

Availability	1-3 business days
Species Reactivity	Human
Format	Purified
Host	Mouse
Clonality	Monoclonal (mouse origin)
Isotype	Mouse IgG1, kappa
Clone Name	SPM506
Purity	Protein G affinity chromatography
UniProt	P06731
Localization	Cytoplasmic and luminal surface
Applications	Immunohistochemistry (FFPE) : 1-2ug/ml for 30 min at RT
Limitations	This anti-CEA antibody is available for research use only.



IHC: Formalin-fixed, paraffin-embedded human colon carcinoma stained with anti-CEA antibody (SPM506)

Description

CEA is synthesized during development in the fetal gut and is re-expressed in increased amounts in intestinal carcinomas and several other tumors. Antibody to CEA is useful in detecting early foci of gastric carcinoma and in distinguishing pulmonary adenocarcinomas (60-70% are CEA+) from pleural mesotheliomas (rarely or weakly CEA+). Anti-CEA positivity is seen in adenocarcinomas from the lung, colon, stomach, esophagus, pancreas, gallbladder, urachus, salivary gland, ovary, and endocervix.

Application Notes

Optimal dilution of the anti-CEA antibody to be determined by the researcher.

1. Staining of formalin-fixed tissues requires boiling tissue sections in 10mM Tris with 1mM EDTA, pH 9.0, for 10-20 min followed by cooling at RT for 20 min
2. The prediluted format is supplied in a dropper bottle and is optimized for use in IHC. After epitope retrieval step (if required), drip mAb solution onto the tissue section and incubate at RT for 30 min.

Immunogen

Human colon carcinoma extract was used as the immunogen for the anti-CEA antibody.

Storage

Store the anti-CEA antibody at 2-8oC (with azide) or aliquot and store at -20oC or colder (without azide).