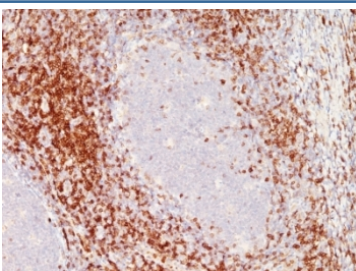


Anti-CD6 Antibody [clone SPM547] (V9104)

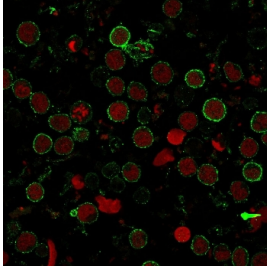
Catalog No.	Formulation	Size
V9104-100UG	0.2 mg/ml in 1X PBS with 0.1 mg/ml BSA (US sourced) and 0.05% sodium azide	100 ug
V9104-20UG	0.2 mg/ml in 1X PBS with 0.1 mg/ml BSA (US sourced) and 0.05% sodium azide	20 ug
V9104SAF-100UG	1 mg/ml in 1X PBS; BSA free, sodium azide free	100 ug
V9104IHC-7ML	Prediluted in 1X PBS with 0.1 mg/ml BSA (US sourced) and 0.05% sodium azide; *For IHC use only*	7 ml

Bulk quote request

Availability	1-3 business days
Species Reactivity	Human
Format	Purified
Host	Mouse
Clonality	Monoclonal (mouse origin)
Isotype	Mouse IgG1, kappa
Clone Name	SPM547
Purity	Protein G affinity chromatography
UniProt	P30203
Localization	Cell surface and Cytoplasmic
Applications	Immunofluorescence : 1-2ug/ml Immunohistochemistry (FFPE) : 1-2ug/ml for 30 min at RT
Limitations	This anti-CD6 antibody is available for research use only.



IHC: Formalin-fixed, paraffin-embedded human tonsil stained with anti-CD6 antibody (clone SPM547).



Immunofluorescent staining of human MOLT4 cells with CD6 antibody (green, clone SPM547) and Reddot nuclear stain (red).

Description

CD6 is a type I transmembrane glycoprotein that contains a 24-amino acid signal sequence, three extracellular 'scavenger receptor cysteine-rich' (SRCR) domains, a membrane-spanning domain and a 44-amino acid cytoplasmic domain. The CD6 glycoprotein is tyrosine phosphorylated during TCR-mediated T cell activation. CD6 shows significant homology to CD5. CD6 is present on mature thymocytes, peripheral T cells and a subset of B cells. Antibodies to CD6 are used to deplete T cells from bone marrow transplants to prevent graft versus host disease.

Application Notes

The optimal dilution of the anti-CD6 antibody for each application should be determined by the researcher.

1. Staining of formalin-fixed tissues requires boiling tissue sections in pH 9 10mM Tris with 1mM EDTA for 10-20 min followed by cooling at RT for 20 minutes.
2. The prediluted format is supplied in a dropper bottle and is optimized for use in IHC. After epitope retrieval step (if required), drip mAb solution onto the tissue section and incubate at RT for 30 min.

Immunogen

Human recombinant protein was used as the immunogen for this anti-CD6 antibody.

Storage

Store the anti-CD6 antibody at 2-8oC (with azide) or aliquot and store at -20oC or colder (without azide).