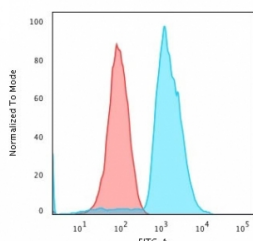


## Anti-CD45RA Antibody [clone SPM568] (V2412)

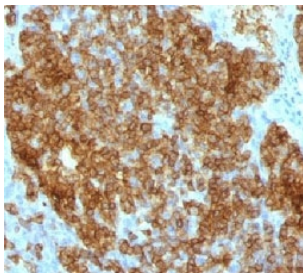
Catalog No.	Formulation	Size
V2412-100UG	0.2 mg/ml in 1X PBS with 0.1 mg/ml BSA (US sourced) and 0.05% sodium azide	100 ug
V2412-20UG	0.2 mg/ml in 1X PBS with 0.1 mg/ml BSA (US sourced) and 0.05% sodium azide	20 ug
V2412SAF-100UG	1 mg/ml in 1X PBS; BSA free, sodium azide free	100 ug
V2412IHC-7ML	Prediluted in 1X PBS with 0.1 mg/ml BSA (US sourced) and 0.05% sodium azide; *For IHC use only*	7 ml

[Bulk quote request](#)

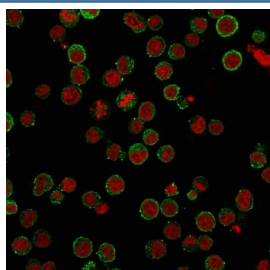
<b>Species Reactivity</b>	Human
<b>Format</b>	Purified
<b>Host</b>	Mouse
<b>Clonality</b>	Monoclonal (mouse origin)
<b>Isotype</b>	Mouse IgG2a, kappa
<b>Clone Name</b>	SPM568
<b>Purity</b>	Protein G affinity chromatography
<b>UniProt</b>	P08575
<b>Localization</b>	Cell surface
<b>Applications</b>	Flow Cytometry : 1-2ug/10 <sup>6</sup> cells Immunofluorescence : 1-2ug/ml Western Blot : 1-2ug/ml Immunohistochemistry (FFPE) : 1-2ug/ml for 30 min at RT
<b>Limitations</b>	This anti-CD45RA antibody is available for research use only.



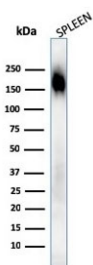
Flow cytometry testing of human Jurkat cells with anti-CD45 antibody (clone SPM568); Red=isotype control, Blue= anti-CD45 antibody.



IHC test of FFPE human tonsil probed with anti-CD45RA antibody (clone SPM568).



Immunofluorescent staining of PFA-fixed human Jurkat cells with anti-CD45RA antibody (green, clone SPM568) and Reddot nuclear stain (red).



Western blot testing of human spleen lysate with CD45RA antibody (clone SPM568).  
Expected molecular weight: 147-220 kDa depending on glycosylation level.

## Description

CD45RA is an isoform of the human leukocyte common antigen (CD45). Human CD45 contains three exons which encode peptide segments designated A, B and C, respectively. The differential splicing of the exons generates at least five isoforms, ABC, AB, BC, B and O. This antibody reacts with ABC and BC isoforms. CD45RA is expressed on 40-50% of peripheral CD4<sup>+</sup> T-cells, 50% of peripheral CD8<sup>+</sup> T-cells, B-cells, and leukemic B-cell lines. T-cells expressing CD45RA are naive or virgin T-cells. T-cells expressing CD45RO are memory T-cells. CD45RA and CD45RO define complementary, predominantly non-overlapping populations of resting peripheral T-cells. This MAb is useful in study on the subpopulation of CD4<sup>+</sup> or CD8<sup>+</sup> T-cells. It can especially be used to differentiate T-cell lymphomas (CD45RO +ve) from B cell lymphomas (CD45RA +ve).

## Application Notes

Due to variation in protocol and secondary antibody used, the anti-CD45RA antibody may need to be titrated for optimal performance.

1. FFPE staining requires boiling tissue sections in pH 9 10mM Tris with 1mM EDTA for 10-20 min followed by cooling at RT for 20 minutes.
2. The prediluted format is supplied in a dropper bottle and is optimized for use in IHC. After epitope retrieval step (if required), drip mAb solution onto the tissue section and incubate at RT for 30 min.

## Immunogen

Stimulated human leukocytes were used as immunogen for this anti-CD45RA antibody.

## Storage

The anti-CD45RA antibody (with azide) can be stored at 2-8oC. The azide-free format should be aliquoted and stored at -20oC or colder.

## References (2)