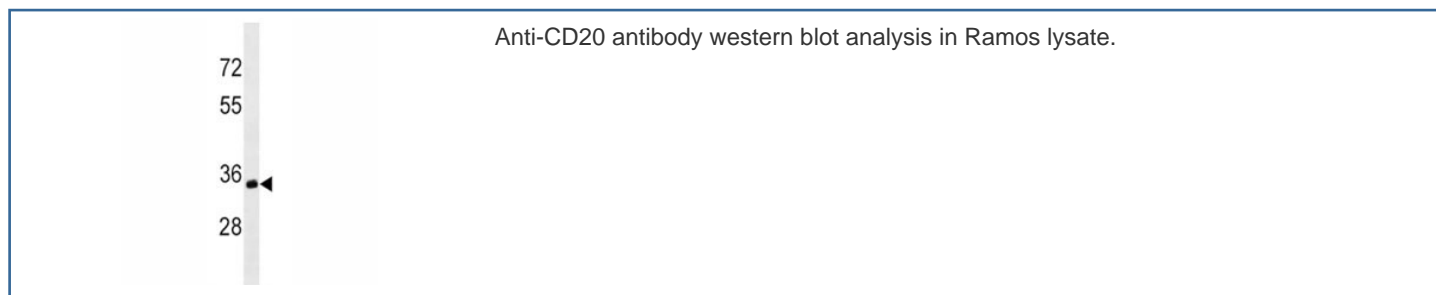


Anti-CD20 Antibody [clone 407CT20.1.2] (F40328)

Catalog No.	Formulation	Size
F40328-0.4ML	In 1X PBS, pH 7.4, with 0.09% sodium azide	0.4 ml
F40328-0.08ML	In 1X PBS, pH 7.4, with 0.09% sodium azide	0.08 ml

[Bulk quote request](#)

Availability	1-3 business days
Species Reactivity	Human
Format	Purified
Clonality	Monoclonal (mouse origin)
Isotype	Mouse IgG1
Clone Name	407CT20.1.2
Purity	Purified
UniProt	P11836
Applications	Western Blot : 1:100-1:500
Limitations	This anti-CD20 antibody is available for research use only.



Description

This gene encodes a member of the membrane-spanning 4A gene family. Members of this nascent protein family are characterized by common structural features and similar intron/exon splice boundaries and display unique expression patterns among hematopoietic cells and nonlymphoid tissues. This gene encodes a B-lymphocyte surface molecule which plays a role in the development and differentiation of B-cells into plasma cells. This family member is localized to 11q12, among a cluster of family members. Alternative splicing of this gene results in two transcript variants which encode the same protein.

Application Notes

Titration of the anti-CD20 antibody may be required due to differences in protocols and secondary/substrate sensitivity.

Immunogen

A portion of amino acids 266-294 from the human protein was used as the immunogen for this anti-CD20 antibody.

Storage

Aliquot the anti-CD20 antibody and store frozen at -20oC or colder. Avoid repeated freeze-thaw cycles.