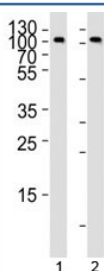


Anti-CD19 Antibody (F44319)

| Catalog No. | Formulation | Size |
|---------------|--|---------|
| F44319-0.4ML | In 1X PBS, pH 7.4, with 0.09% sodium azide | 0.4 ml |
| F44319-0.08ML | In 1X PBS, pH 7.4, with 0.09% sodium azide | 0.08 ml |

[Bulk quote request](#)

| | |
|---------------------------|---|
| Availability | 1-3 business days |
| Species Reactivity | Human |
| Format | Antigen affinity purified |
| Clonality | Polyclonal (rabbit origin) |
| Isotype | Rabbit Ig |
| Purity | Antigen affinity |
| UniProt | P15391 |
| Localization | Cell surface, cytoplasmic |
| Applications | Western Blot : 1:1000 |
| Limitations | This anti-CD19 antibody is available for research use only. |



Western blot analysis of lysate from 1) Raji and 2) Ramos cell line using anti-CD19 antibody at 1:1000. It is a glycoprotein visualized between 60~100 kDa.

Description

Assembles with the antigen receptor of B-lymphocytes in order to decrease the threshold for antigen receptor-dependent stimulation. [UniProt]

Application Notes

Titration of the anti-CD19 antibody may be required due to differences in protocols and secondary/substrate sensitivity.

Immunogen

A portion of amino acids 393-421 from the human protein was used as the immunogen for this anti-CD19 antibody.

Storage

Aliquot the anti-CD19 antibody and store frozen at -20oC or colder. Avoid repeated freeze-thaw cycles.