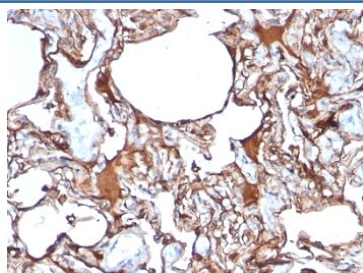


Anti-CD146 Antibody / MCAM [clone SPM620] (V2697)

Catalog No.	Formulation	Size
V2697-100UG	0.2 mg/ml in 1X PBS with 0.1 mg/ml BSA (US sourced) and 0.05% sodium azide	100 ug
V2697-20UG	0.2 mg/ml in 1X PBS with 0.1 mg/ml BSA (US sourced) and 0.05% sodium azide	20 ug
V2697SAF-100UG	1 mg/ml in 1X PBS; BSA free, sodium azide free	100 ug
V2697IHC-7ML	Prediluted in 1X PBS with 0.1 mg/ml BSA (US sourced) and 0.05% sodium azide; *For IHC use only*	7 ml

[Bulk quote request](#)

Availability	1-3 business days
Species Reactivity	Human
Format	Purified
Host	Mouse
Clonality	Monoclonal (mouse origin)
Isotype	Mouse IgG1, kappa
Clone Name	SPM620
Purity	Protein G affinity chromatography
UniProt	P43121
Localization	Cell surface, cytoplasm
Applications	Immunohistochemistry (FFPE) : 1-2ug/ml for 30 min at RT
Limitations	This anti-CD146 antibody is available for research use only.



IHC: Formalin-fixed, paraffin-embedded human melanoma stained with anti-CD146 antibody (SPM620)

Description

The human Mel-CAM gene maps to chromosome 11q23 and encodes a trans-membrane glycoprotein, also designated MCAM, MUC 18 or CD146, that belongs to the immunoglobulin superfamily and functions as a Ca²⁺-independent cell adhesion molecule. CD146 expression is restricted to advanced primary and metastatic melanomas and to cell lines of the neuroectodermal lineage, but not normal melanocytes. It is found on 80% of advanced primary human melanomas and correlates well with development of metastatic disease.

Application Notes

Optimal dilution of the anti-CD146 antibody should be determined by the researcher.

1. Staining of formalin-fixed tissues requires boiling tissue sections in 10mM Tris with 1mM EDTA, pH 9, for 10-20 min followed by cooling at RT for 20 minutes
2. The prediluted format is supplied in a dropper bottle and is optimized for use in IHC. After epitope retrieval step (if required), drip mAb solution onto the tissue section and incubate at RT for 30 min.

Immunogen

Recombinant human protein was used as the immunogen for the anti-CD146 antibody.

Storage

Store the anti-CD146 antibody at 2-8°C (with azide) or aliquot and store at -20°C or colder (without azide).