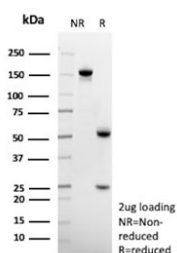


Anti-CD14 Antibody [clone LPSR/553] (V2423)

Catalog No.	Formulation	Size
V2423-100UG	0.2 mg/ml in 1X PBS with 0.1 mg/ml BSA (US sourced) and 0.05% sodium azide	100 ug
V2423-20UG	0.2 mg/ml in 1X PBS with 0.1 mg/ml BSA (US sourced) and 0.05% sodium azide	20 ug
V2423SAF-100UG	1 mg/ml in 1X PBS; BSA free, sodium azide free	100 ug

Bulk quote request

Availability	1-3 business days
Species Reactivity	Human
Format	Purified
Clonality	Monoclonal (mouse origin)
Isotype	Mouse IgG1, kappa
Clone Name	LPSR/553
Purity	Protein G affinity chromatography
Buffer	1X PBS, pH 7.4
UniProt	P08571
Localization	Cell surface, Secreted, Cytoplasmic (Golgi)
Applications	Flow Cytometry : 1-2ug/10 ⁶ cells Immunofluorescence : 1-2ug/ml
Limitations	This anti-CD14 antibody is available for research use only.



SDS-PAGE Analysis of Purified, BSA-Free Anti-CD14 Antibody (clone LPSR/553). Confirmation of Integrity and Purity of the Antibody.

Description

CD14 is anchored to cells by linkage to glycosylphosphatidylinositol (GPI) and functions as a high affinity receptor for complexes of LPS and LPS binding protein (LBP). Soluble CD14, also binding to LPS, acts at physiological concentration as an LPS agonist and has, at higher concentrations, an LPS antagonizing effect in cell activation.

Application Notes

The stated application concentrations are suggested starting amounts. Variations in protocols, secondaries and substrates may require the anti-CD14 antibody to be titrated up or down for optimal performance.

Immunogen

Full length human recombinant CD14 protein was used as the antigen for this anti-CD14 antibody.

Storage

Store the anti-CD14 antibody (with azide) at 2-8°C. The azide-free format should be aliquoted and stored at -20°C or colder.