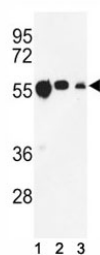


Anti-beta Tubulin Antibody (F51482)

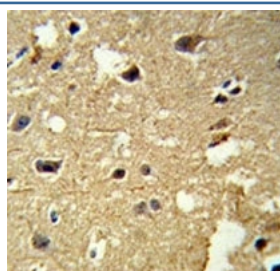
Catalog No.	Formulation	Size
F51482-0.4ML	In 1X PBS, pH 7.4, with 0.09% sodium azide	0.4 ml
F51482-0.08ML	In 1X PBS, pH 7.4, with 0.09% sodium azide	0.08 ml

[Bulk quote request](#)

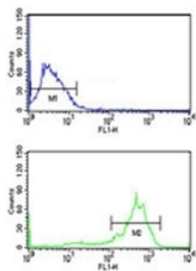
Availability	1-3 business days
Species Reactivity	Human
Format	Antigen affinity purified
Host	Rabbit
Clonality	Polyclonal (rabbit origin)
Isotype	Rabbit Ig
Purity	Antigen affinity
UniProt	Q9H4B7
Applications	Western Blot : 1:1000 IHC (Paraffin) : 1:50-1:100 Flow Cytometry : 1:10-1:50
Limitations	This anti-beta Tubulin antibody is available for research use only.



Western blot analysis of anti-beta Tubulin antibody and (1) CEM, (2) MCF-7, and (3) MDA-MB231 lysate.



IHC analysis of FFPE human brain tissue stained with anti-beta Tubulin antibody



Anti-beta Tubulin antibody flow cytometry analysis of MCF-7 cells (bottom histogram) compared to a negative control cell (top histogram). FITC-conjugated goat-anti-rabbit secondary Ab was used for the analysis.

Description

Beta tubulins are one of two core protein families (alpha and beta tubulins) that heterodimerize and assemble to form microtubules. Tubulin beta-1 chain (TUBB1) is specifically expressed in platelets and megakaryocytes and may be involved in proplatelet production and platelet release.

Application Notes

Titration of the anti-beta Tubulin antibody may be required due to differences in protocols and secondary/substrate sensitivity.

Immunogen

This anti-beta Tubulin antibody was produced from rabbits immunized with human TUBB1 recombinant protein.

Storage

Aliquot the anti-beta Tubulin antibody and store frozen at -20oC or colder. Avoid repeated freeze-thaw cycles.