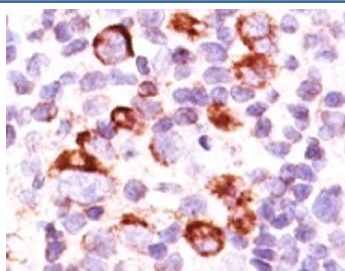


## Anti-Bcl-X Antibody [clone SPM165] (V9075)

Catalog No.	Formulation	Size
V9075-100UG	0.2 mg/ml in 1X PBS with 0.1 mg/ml BSA (US sourced) and 0.05% sodium azide	100 ug
V9075-20UG	0.2 mg/ml in 1X PBS with 0.1 mg/ml BSA (US sourced) and 0.05% sodium azide	20 ug
V9075SAF-100UG	1 mg/ml in 1X PBS; BSA free, sodium azide free	100 ug
V9075IHC-7ML	Prediluted in 1X PBS with 0.1 mg/ml BSA (US sourced) and 0.05% sodium azide; *For IHC use only*	7 ml

[Bulk quote request](#)

<b>Availability</b>	1-3 business days
<b>Species Reactivity</b>	Human
<b>Format</b>	Purified
<b>Host</b>	Mouse
<b>Clonality</b>	Monoclonal (mouse origin)
<b>Isotype</b>	Mouse IgG2a, kappa
<b>Clone Name</b>	SPM165
<b>Purity</b>	Protein G affinity chromatography
<b>UniProt</b>	Q07817
<b>Localization</b>	Cytoplasmic and cell/nuclear membrane
<b>Applications</b>	Immunohistochemistry (FFPE) : 1-2ug/ml for 30 min at RT
<b>Limitations</b>	This anti-Bcl-X antibody is available for research use only.



IHC: Formalin-fixed, paraffin-embedded human Hodgkin's lymphoma stained with anti-Bcl-X antibody (SPM165).

## Description

Recognizes a protein of 27kDa, identified as the Bcl-X protein. This mAb shows no cross-reaction with Bcl-2 or Bax protein. Bcl-X has two isoforms, Bcl-XL (long), a 241 amino acid protein which suppresses cell death. And Bcl-XS (short), a 178 amino acid protein lacking a 63 amino acid domain which functions as a dominant inhibitor of Bcl-2. This mAb reacts with both Bcl-XS and Bcl-XL proteins.

## Application Notes

The optimal dilution of the anti-Bcl-X antibody for each application should be determined by the researcher.

1. Staining of formalin-fixed tissues requires boiling tissue sections in 10mM Tris with 1mM EDTA, pH 9.0, for 10-20 min followed by cooling at RT for 20 minutes.
2. The prediluted format is supplied in a dropper bottle and is optimized for use in IHC. After epitope retrieval step (if required), drip mAb solution onto the tissue section and incubate at RT for 30 min.

## Immunogen

Amino acids 3-14 (QSNRELVVDFLS) from the human protein were used as the immunogen for this anti-Bcl-X antibody.

## Storage

Store the anti-Bcl-X antibody at 2-8oC (with azide) or aliquot and store at -20oC or colder (without azide).