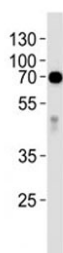


## Anti-Alkaline Phosphatase Antibody (intestinal/placental) (F44184)

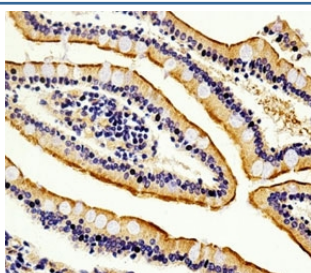
Catalog No.	Formulation	Size
F44184-0.4ML	In 1X PBS, pH 7.4, with 0.09% sodium azide	0.4 ml
F44184-0.08ML	In 1X PBS, pH 7.4, with 0.09% sodium azide	0.08 ml

[Bulk quote request](#)

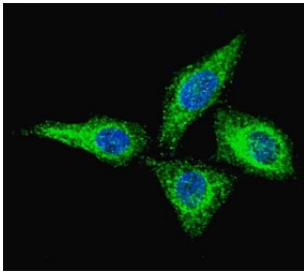
<b>Availability</b>	1-3 business days
<b>Species Reactivity</b>	Human
<b>Format</b>	Antigen affinity purified
<b>Clonality</b>	Polyclonal (rabbit origin)
<b>Isotype</b>	Rabbit Ig
<b>Purity</b>	Antigen affinity
<b>UniProt</b>	P09923
<b>Applications</b>	Western Blot : 1:1000 IHC (Paraffin) : 1:50-100 Immunofluorescence : 1:100
<b>Limitations</b>	This anti-Alkaline Phosphatase antibody is available for research use only.



Western blot analysis of lysate from human placenta tissue lysate using anti-Alkaline Phosphatase antibody diluted at 1:1000.



Immunohistochemical analysis of paraffin-embedded human small intestine section using anti-Alkaline Phosphatase antibody diluted at 1:100 dilution.



Fluorescent confocal image of HeLa cells stained with anti-Alkaline Phosphatase antibody at 1:100. Immunoreactivity is localized to the cytoplasm.

## Description

There are at least four distinct but related alkaline phosphatases: intestinal, placental, placental-like, and liver/bone/kidney (tissue non-specific). The intestinal alkaline phosphatase gene encodes a digestive brush-border enzyme. This enzyme is upregulated during small intestinal epithelial cell differentiation.

## Application Notes

Titration of the anti-Alkaline Phosphatase antibody may be required due to differences in protocols and secondary/substrate sensitivity.

## Immunogen

A portion of amino acids 274-304 from human ALPI was used as the immunogen for this anti-Alkaline Phosphatase antibody. This sequence is 87% homologous in human ALPP.

## Storage

Aliquot the anti-Alkaline Phosphatase antibody and store frozen at -20°C or colder. Avoid repeated freeze-thaw cycles.