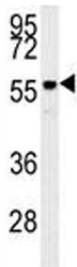


Anti-AKT2 Antibody [clone 148CT5.4.1.4] (F40226)

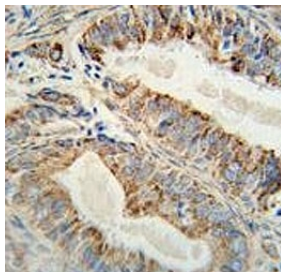
Catalog No.	Formulation	Size
F40226-0.4ML	In 1X PBS, pH 7.4, with 0.09% sodium azide	0.4 ml
F40226-0.08ML	In 1X PBS, pH 7.4, with 0.09% sodium azide	0.08 ml

[Bulk quote request](#)

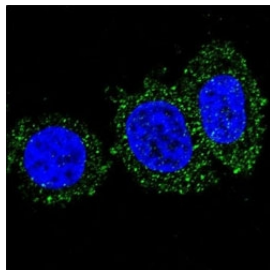
Availability	1-3 business days
Species Reactivity	Human, Mouse
Format	Purified
Host	Mouse
Clonality	Monoclonal (mouse origin)
Isotype	Mouse IgG1
Clone Name	148CT5.4.1.4
Purity	Purified
UniProt	P31751
Applications	Western Blot : 1:100-1:500 IHC (Paraffin) : 1:50-1:100 Immunofluorescence : 1:10-1:50
Limitations	This anti-AKT2 antibody is available for research use only.



Anti-AKT2 antibody western blot analysis in mouse brain tissue lysate. Predicted molecular weight: ~56kDa.



Anti-AKT2 antibody immunohistochemistry analysis in formalin fixed and paraffin embedded human prostate carcinoma.



Confocal immunofluorescent analysis of anti-AKT2 antibody with HeLa cells followed by Alexa Fluor 488-conjugated goat anti-mouse IgG (green). DAPI was used as a nuclear counterstain (blue).

Description

AKT2 is a putative oncogene encoding a protein belonging to a subfamily of serine/threonine kinases containing SH2-like (Src homology 2-like) domains. AKT2 was shown to be amplified and overexpressed in 2 of 8 ovarian carcinoma cell lines and 2 of 15 primary ovarian tumors. Overexpression contributes to the malignant phenotype of a subset of human ductal pancreatic cancers. The encoded protein is a general protein kinase capable of phosphorylating several known proteins.

Application Notes

Titration of the anti-AKT2 antibody may be required due to differences in protocols and secondary/substrate sensitivity.

Immunogen

This anti-AKT2 antibody was produced from a mouse immunized with AKT2 recombinant protein.

Storage

Aliquot the anti-AKT2 antibody and store frozen at -20°C or colder. Avoid repeated freeze-thaw cycles.