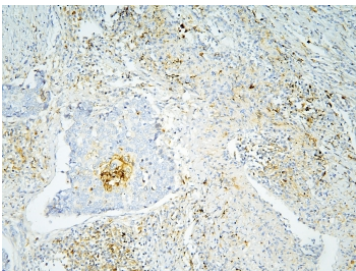


## Annexin A3 Antibody (RQ4892)

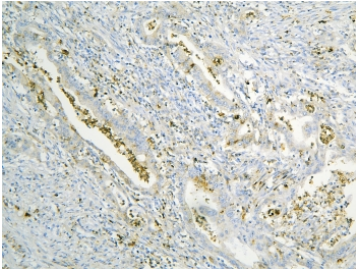
Catalog No.	Formulation	Size
RQ4892	0.5mg/ml if reconstituted with 0.2ml sterile DI water	100 ug

### Bulk quote request

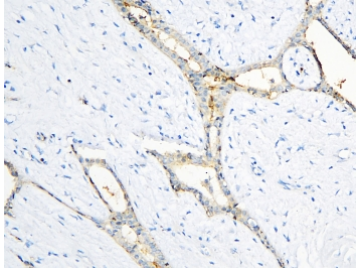
<b>Availability</b>	1-3 business days
<b>Species Reactivity</b>	Human, Mouse, Rat
<b>Format</b>	Antigen affinity purified
<b>Host</b>	Rabbit
<b>Clonality</b>	Polyclonal (rabbit origin)
<b>Isotype</b>	Rabbit IgG
<b>Purity</b>	Antigen affinity purified
<b>Buffer</b>	Lyophilized from 1X PBS with 2% Trehalose and 0.025% sodium azide
<b>UniProt</b>	P12429
<b>Localization</b>	Cytoplasmic, membranous
<b>Applications</b>	Western Blot : 0.5-1ug/ml Immunohistochemistry (FFPE) : 1-2ug/ml Direct ELISA : 0.1-0.5ug/ml
<b>Limitations</b>	This Annexin A3 antibody is available for research use only.



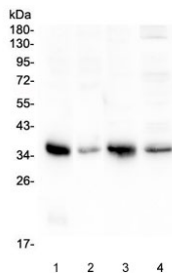
IHC staining of FFPE human lung cancer with Annexin A3 antibody at 1ug/ml. HIER: boil tissue sections in pH6, 10mM citrate buffer, for 10-20 min and allow to cool before testing.



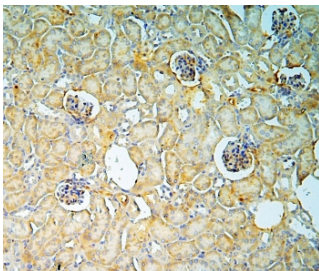
IHC staining of FFPE human intestinal cancer with Annexin A3 antibody at 1ug/ml. HIER: boil tissue sections in pH6, 10mM citrate buffer, for 10-20 min and allow to cool before testing.



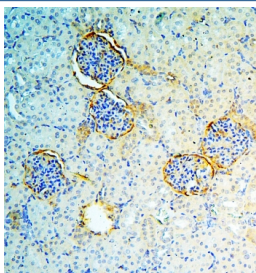
IHC staining of FFPE human breast cancer with Annexin A3 antibody at 1ug/ml. HIER: boil tissue sections in pH6, 10mM citrate buffer, for 10-20 min and allow to cool before testing.



Western blot testing of 1) rat lung, 2) rat ovary, 3) mouse lung and 4) mouse ovary with Annexin A3 antibody at 0.5ug/ml. Predicted molecular weight ~36 kDa.



IHC staining of FFPE mouse kidney with Annexin A3 antibody at 1ug/ml. HIER: boil tissue sections in pH6, 10mM citrate buffer, for 10-20 min and allow to cool before testing.



IHC staining of FFPE rat kidney with Annexin A3 antibody at 1ug/ml. HIER: boil tissue sections in pH6, 10mM citrate buffer, for 10-20 min and allow to cool before testing.

## Description

Annexin A3 is a protein that in humans is encoded by the Annexin A3 gene. The Annexin A3 gene contains 13 exons and spans 58 kb of genomic DNA. The Annexin A3 gene is mapped to 4q21. It is abnormally expressed in fetuses of both IVF and ICSI, which may contribute to the increase risk of birth defects in these ART. This gene encodes a member of the annexin family. Members of this calcium-dependent phospholipid-binding protein family play a role in the regulation of cellular growth and in signal transduction pathways. This protein functions in the inhibition of phospholipase A2 and cleavage of inositol 1,2-cyclic phosphate to form inositol 1-phosphate. This protein may also play a role in anti-coagulation.

## Application Notes

Optimal dilution of the Annexin A3 antibody should be determined by the researcher.

## Immunogen

Amino acids D23-D323 from the human protein were used as the immunogen for the Annexin A3 antibody.

## Storage

After reconstitution, the Annexin A3 antibody can be stored for up to one month at 4oC. For long-term, aliquot and store at -20oC. Avoid repeated freezing and thawing.