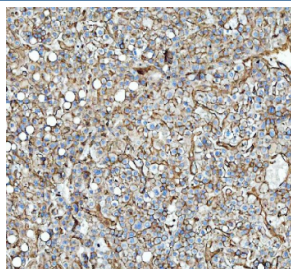


## Annexin A2 Antibody / ANXA2 (R30414)

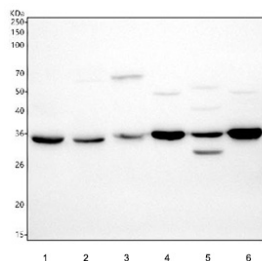
Catalog No.	Formulation	Size
R30414	0.5mg/ml if reconstituted with 0.2ml sterile DI water	100 ug

**Bulk quote request**

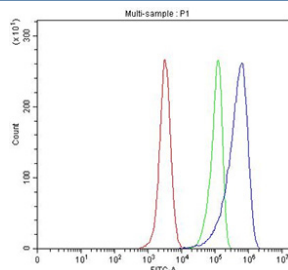
<b>Availability</b>	1-3 business days
<b>Species Reactivity</b>	Human, Mouse, Rat
<b>Format</b>	Antigen affinity purified
<b>Host</b>	Rabbit
<b>Clonality</b>	Polyclonal (rabbit origin)
<b>Isotype</b>	Rabbit IgG
<b>Purity</b>	Antigen affinity
<b>Buffer</b>	Lyophilized from 1X PBS with 2% Trehalose
<b>UniProt</b>	P07355
<b>Localization</b>	Cell membrane, cytoplasm
<b>Applications</b>	Western Blot : 0.5-1ug/ml Immunohistochemistry (FFPE) : 2-5ug/ml Flow Cytometry : 1-3ug/million cells
<b>Limitations</b>	This Annexin A2 antibody is available for research use only.



IHC staining of FFPE human liver cancer tissue with Annexin A2 antibody, HRP-secondary and DAB substrate. HIER: boil tissue sections in pH8 EDTA for 20 min and allow to cool before testing.



Western blot testing of 1) human HeLa, 2) human placenta, 3) rat kidney, 4) rat C6, 5) mouse kidney and 6) mouse NIH 3T3 cell lysate with Annexin A2 antibody. Predicted molecular weight ~39 kDa.



Flow cytometry testing of fixed human HeLa cells with Annexin A2 antibody at 1ug/million cells (blocked with goat sera); Red=cells alone, Green=isotype control, Blue=Annexin A2 antibody.

## Description

Annexin A2 (ANXA2) is a calcium-dependent phospholipid-binding protein that plays important roles in membrane organization, vesicle trafficking, and cytoskeletal interactions. It functions as both a monomer and as part of a heterotetrameric complex with S100A10, influencing diverse cellular processes.

Annexin A2 is involved in endocytosis, exocytosis, fibrinolysis, and cell migration. It has been linked to angiogenesis, immune responses, and cancer progression through its roles in plasmin generation and cytoskeletal remodeling. Altered Annexin A2 expression has been observed in multiple diseases, making it an important biomarker and research target.

Using a high-quality Annexin A2 antibody allows for reliable detection in applications such as western blot, immunohistochemistry, and immunofluorescence. An Annexin A2 antibody from NSJ Bioreagents ensures specificity and reproducibility for studies in membrane biology, signaling pathways, and disease mechanisms. Selecting the right Annexin A2 antibody is essential for accurate and consistent experimental results.

## Application Notes

The stated application concentrations are suggested starting amounts. Titration of the Annexin A2 antibody may be required due to differences in protocols and secondary/substrate sensitivity.

## Immunogen

An amino acid sequence from the middle region of human Annexin A2 (RAEDGSVIDYELIDQDARDLY) was used as the immunogen for this Annexin A2 antibody.

## Storage

After reconstitution, the Annexin A2 antibody can be stored for up to one month at 4oC. For long-term, aliquot and store at -20oC. Avoid repeated freezing and thawing.

