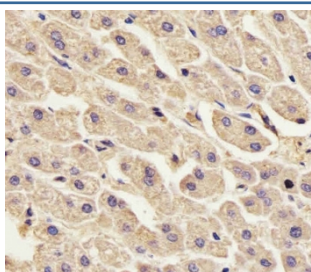


Annexin A2 Antibody / ANXA2 (F54307)

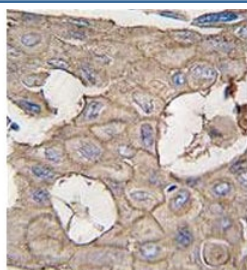
Catalog No.	Formulation	Size
F54307-0.4ML	In 1X PBS, pH 7.4, with 0.09% sodium azide	0.4 ml
F54307-0.08ML	In 1X PBS, pH 7.4, with 0.09% sodium azide	0.08 ml

[Bulk quote request](#)

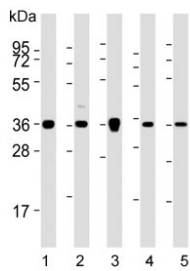
Availability	1-3 business days
Species Reactivity	Human, Mouse
Format	Purified
Host	Rabbit
Clonality	Polyclonal (rabbit origin)
Isotype	Rabbit Ig
Purity	Antigen affinity purified
UniProt	P07355
Localization	Cytoplasmic
Applications	Western Blot : 1:500-1:2000 Immunohistochemistry (FFPE) : 1:25
Limitations	This Annexin A2 antibody is available for research use only.



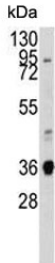
IHC testing of FFPE human liver tissue with Annexin A2 antibody. HIER: steam section in pH6 citrate buffer for 20 min and allow to cool prior to staining.



IHC testing of FFPE human lung carcinoma tissue with Annexin A2 antibody. HIER: steam section in pH6 citrate buffer for 20 min and allow to cool prior to staining.



Western blot testing of 1) human HeLa, 2) human MCF7, 3) mouse NIH 3T3, 4) human SH-SY5Y and 5) human SK-BR-3 cell lysate with Annexin A2. Predicted molecular weight ~38 kDa.



Western blot testing of mouse lung lysate with Annexin A2. Predicted molecular weight ~38 kDa.

Description

ANXA2 is a member of the annexin family. Members of this calcium-dependent phospholipid-binding protein family play a role in the regulation of cellular growth and in signal transduction pathways. This protein functions as an autocrine factor which heightens osteoclast formation and bone resorption.

Application Notes

The stated application concentrations are suggested starting points. Titration of the Annexin A2 antibody may be required due to differences in protocols and secondary/substrate sensitivity.

Immunogen

A portion of amino acids 19-49 from the human protein were used as the immunogen for the Annexin A2 antibody.

Storage

Aliquot the Annexin A2 antibody and store frozen at -20oC or colder. Avoid repeated freeze-thaw cycles.