

## Annexin A10 Antibody (R31188)

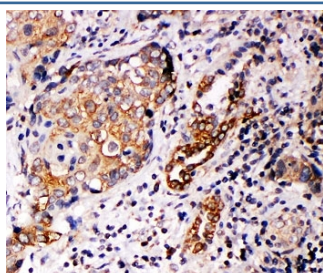
Catalog No.	Formulation	Size
R31188	0.5mg/ml if reconstituted with 0.2ml sterile DI water	100 ug

**Bulk quote request**

<b>Availability</b>	1-3 business days
<b>Species Reactivity</b>	Human, Rat
<b>Format</b>	Antigen affinity purified
<b>Clonality</b>	Polyclonal (rabbit origin)
<b>Isotype</b>	Rabbit IgG
<b>Purity</b>	Antigen affinity
<b>Buffer</b>	Lyophilized from 1X PBS with 2.5% BSA and 0.025% sodium azide/thimerosal
<b>UniProt</b>	Q9UJ72
<b>Applications</b>	Western Blot : 0.5-1ug/ml IHC (FFPE) : 0.5-1ug/ml
<b>Limitations</b>	This Annexin A10 antibody is available for research use only.



Western blot testing of Annexin A10 antibody and A549 cell lysate. Predicted molecular weight: ~36kDa.



IHC-P: Annexin A10 antibody testing of human lung cancer tissue

## Description

Annexin A10 is a member of the annexin family of calcium-dependent phospholipid-binding proteins. By FISH, Morgan et al.(1999) mapped the ANXA10 gene to chromosome 4q33. Morgan et al.(1999) suggested that the depletion or ablation of principal calcium-binding sites in Annexin A10 and A9, respectively, may dispose them to function in distinct tissue environments where calcium sensitivity is not a major functional determinant.

## Application Notes

The stated application concentrations are suggested starting amounts. Titration of the Annexin A10 antibody may be required due to differences in protocols and secondary/substrate sensitivity.

## Immunogen

An amino acid sequence from the C-terminus of human Annexin A10 (HYKKALLAICAGDAEDY) was used as the immunogen for this Annexin A10 antibody.

## Storage

After reconstitution, the Annexin A10 antibody can be stored for up to one month at 4oC. For long-term, aliquot and store at -20oC. Avoid repeated freezing and thawing.