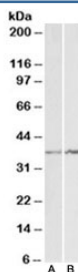


## Annexin A1 Antibody (R33307)

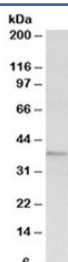
Catalog No.	Formulation	Size
R33307-100UG	0.5 mg/ml in 1X TBS, pH7.3, with 0.5% BSA (US sourced) and 0.02% sodium azide	100 ug

[Bulk quote request](#)

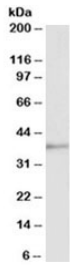
Availability	1-3 business days
Species Reactivity	Human, Rat
Predicted Reactivity	Cow, Dog, Mouse, Pig
Format	Antigen affinity purified
Host	Goat
Clonality	Polyclonal (goat origin)
Isotype	Goat Ig
Purity	Antigen affinity
Gene ID	301
Applications	Western Blot : 1-3ug/ml ELISA (peptide) LOD : 1:4000
Limitations	This Annexin A1 antibody is available for research use only.



Western blot testing of K562 [A] and NIH3T3 [B] lysates with Annexin A1 antibody at 1ug/ml. Predicted molecular weight ~38kDa.



Western blot of rat spleen lysate with Annexin A1 antibody at 1ug/ml.



Western blot of pig spleen lysate with Annexin A1 antibody at 1ug/ml.

## Description

Additional name(s) for this target protein: ANXA1

## Application Notes

Optimal dilution of the Annexin A1 antibody should be determined by the researcher.

## Immunogen

Amino acids CQAILDETKGDYEK were used as the immunogen for this Annexin A1 antibody.

## Storage

Aliquot and store the Annexin A1 antibody at -20oC.