

Annexin A1 Antibody (F49712)

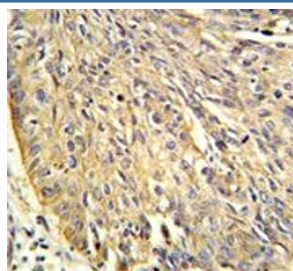
Catalog No.	Formulation	Size
F49712-0.4ML	In 1X PBS, pH 7.4, with 0.09% sodium azide	0.4 ml
F49712-0.08ML	In 1X PBS, pH 7.4, with 0.09% sodium azide	0.08 ml

[Bulk quote request](#)

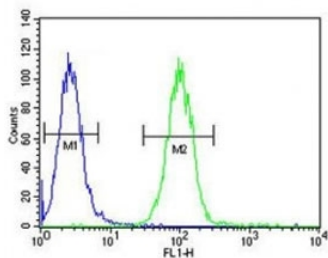
Availability	1-3 business days
Species Reactivity	Human
Format	Purified
Clonality	Polyclonal (rabbit origin)
Isotype	Rabbit Ig
Purity	Purified
UniProt	P04083
Applications	Western Blot : 1:1000 IHC (Paraffin) : 1:50-1:100 Flow Cytometry : 1:10-1:50
Limitations	This Annexin A1 antibody is available for research use only.

72
55
43
34
26

Western blot analysis of Annexin A1 antibody and A2058 lysate. Predicted molecular weight ~36 kDa.



Annexin A1 antibody IHC analysis in formalin fixed and paraffin embedded human lung carcinoma.



Annexin A1 antibody flow cytometric analysis of A2058 cells (green) compared to a [negative control](#) (blue). FITC-conjugated goat-anti-rabbit secondary Ab was used for the analysis.

Description

Annexin I belongs to a family of Ca(2+)-dependent phospholipid binding proteins which have a molecular weight of approximately 35,000 to 40,000 and are preferentially located on the cytosolic face of the plasma membrane. Annexin I protein has an apparent relative molecular mass of 40 kDa, with phospholipase A2 inhibitory activity. Since phospholipase A2 is required for the biosynthesis of the potent mediators of inflammation, prostaglandins and leukotrienes, annexin I may have potential anti-inflammatory activity.

Application Notes

Titration of the Annexin A1 antibody may be required due to differences in protocols and secondary/substrate sensitivity.

Immunogen

A portion of amino acids 129-158 from the human protein was used as the immunogen for this Annexin A1 antibody.

Storage

Aliquot the Annexin A1 antibody and store frozen at -20oC or colder. Avoid repeated freeze-thaw cycles.