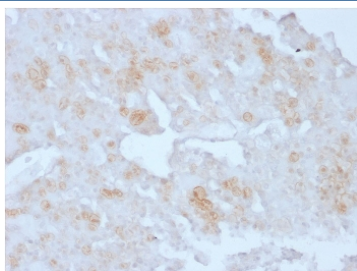


## Annexin A1 Antibody [clone ANXA1/3727] (V8528)

Catalog No.	Formulation	Size
V8528-100UG	0.2 mg/ml in 1X PBS with 0.1 mg/ml BSA (US sourced) and 0.05% sodium azide	100 ug
V8528-20UG	0.2 mg/ml in 1X PBS with 0.1 mg/ml BSA (US sourced) and 0.05% sodium azide	20 ug
V8528SAF-100UG	1 mg/ml in 1X PBS; BSA free, sodium azide free	100 ug

[Bulk quote request](#)

Availability	1-3 business days
Species Reactivity	Human
Format	Purified
Host	Mouse
Clonality	Monoclonal (mouse origin)
Isotype	Mouse IgG2a, kappa
Clone Name	ANXA1/3727
Purity	Protein G affinity chromatography
UniProt	P04083
Localization	Nucleus, cytoplasm
Applications	Immunohistochemistry (FFPE) : 1-2ug/ml for 30 min at RT
Limitations	This Annexin A1 antibody is available for research use only.



IHC staining of FFPE human placenta with Annexin A1 antibody (clone ANXA1/3727).  
HIER: boil tissue sections in pH6, 10mM citrate buffer, for 20 min and allow to cool before testing.

## Description

The ANXA1 gene belongs to the annexin family, and contains 4 annexin repeats. A pair of annexin repeats may form one binding site for calcium and a phospholipid. ANXA1 promotes membrane fusion and is involved in exocytosis. The gene for ANXA1 is upregulated in hairy cell leukemia (HCL), and its protein expression is specific for HCL. Detection of ANXA1 provides a simple, highly sensitive and specific assay for diagnosing HCL. Annexin A1 has also been found to be protective against DNA damage induced by heat in breast cancer cells, suggesting it is involved in tumor suppressive and protective activities, and also is associated with treatment resistance.

## **Application Notes**

Optimal dilution of the Annexin A1 antibody should be determined by the researcher.

## **Immunogen**

Recombinant full-length human Annexin A1 protein was used as the immunogen for the Annexin A1 antibody.

## **Storage**

Store the Annexin A1 antibody at 2-8oC (with azide) or aliquot and store at -20oC or colder (without azide).