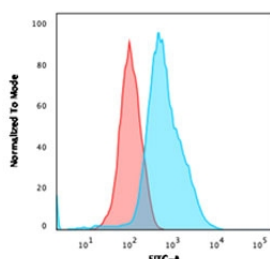


## Annexin A1 Antibody [clone ANXA1/1672] (V3736)

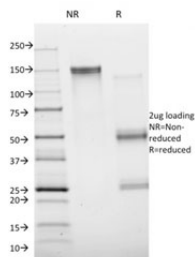
Catalog No.	Formulation	Size
V3736-100UG	0.2 mg/ml in 1X PBS with 0.1 mg/ml BSA (US sourced) and 0.05% sodium azide	100 ug
V3736-20UG	0.2 mg/ml in 1X PBS with 0.1 mg/ml BSA (US sourced) and 0.05% sodium azide	20 ug
V3736SAF-100UG	1 mg/ml in 1X PBS; BSA free, sodium azide free	100 ug

[Bulk quote request](#)

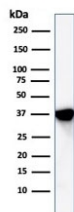
<b>Availability</b>	1-3 business days
<b>Species Reactivity</b>	Human
<b>Format</b>	Purified
<b>Host</b>	Mouse
<b>Clonality</b>	Monoclonal (mouse origin)
<b>Isotype</b>	Mouse IgG1, kappa
<b>Clone Name</b>	ANXA1/1672
<b>Purity</b>	Protein G affinity chromatography
<b>UniProt</b>	P04083
<b>Localization</b>	Nuclear and Cytoplasmic
<b>Applications</b>	Flow Cytometry : 1-2ug/million cells ELISA : 2-4ug/ml (order BSA/azide-free format) Western Blot : 1-2ug/ml
<b>Limitations</b>	This Annexin A1 antibody is available for research use only.



Flow testing of fixed and permeabilized human HeLa cells with Annexin A1 antibody (clone ANXA1/1672). Red=isotype control, Blue= Annexin A1 antibody.



SDS-PAGE analysis of purified, BSA-free Annexin A1 antibody (clone ANXA1/1672) as confirmation of integrity and purity.



Western blot testing of human A549 cell lysate with Annexin A1 antibody. Predicted molecular weight ~38 kDa.

## Description

The ANXA1 gene belongs to the annexin family, and contains 4 annexin repeats. A pair of annexin repeats may form one binding site for calcium and a phospholipid. ANXA1 promotes membrane fusion and is involved in exocytosis. The gene for ANXA1 is upregulated in hairy cell leukemia (HCL), and its protein expression is specific for HCL. Detection of ANXA1 provides a simple, highly sensitive and specific assay for diagnosing HCL. Annexin A1 has also been found to be protective against DNA damage induced by heat in breast cancer cells, suggesting it is involved in tumor suppressive and protective activities, and also is associated with treatment resistance.

## Application Notes

Optimal dilution of the Annexin A1 antibody to be determined by the researcher.

## Immunogen

Recombinant human full-length protein was used as the immunogen for the Annexin A1 antibody.

## Storage

Store the Annexin A1 antibody at 2-8°C (with azide) or aliquot and store at -20°C or colder (without azide).