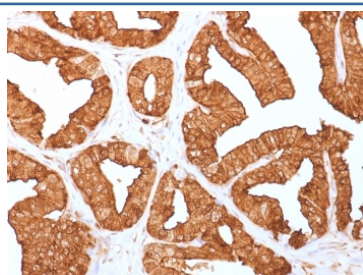


Annexin A1 Antibody [clone ANXA1/1671] (V7526)

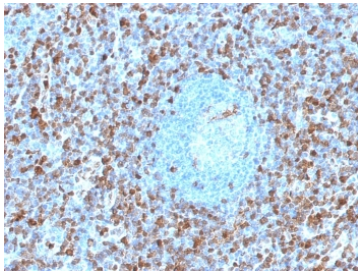
Catalog No.	Formulation	Size
V7526-100UG	0.2 mg/ml in 1X PBS with 0.1 mg/ml BSA (US sourced) and 0.05% sodium azide	100 ug
V7526-20UG	0.2 mg/ml in 1X PBS with 0.1 mg/ml BSA (US sourced) and 0.05% sodium azide	20 ug
V7526SAF-100UG	1 mg/ml in 1X PBS; BSA free, sodium azide free	100 ug
V7526IHC-7ML	Prediluted in 1X PBS with 0.1 mg/ml BSA (US sourced) and 0.05% sodium azide; *For IHC use only*	7 ml

[Bulk quote request](#)

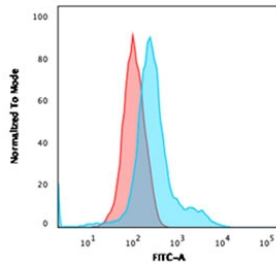
Availability	1-3 business days
Species Reactivity	Human
Format	Purified
Clonality	Monoclonal (mouse origin)
Isotype	Mouse IgG2b, kappa
Clone Name	ANXA1/1671
Purity	Protein G affinity chromatography
UniProt	P04083
Localization	Nuclear and Cytoplasmic
Applications	Flow Cytometry : 1-2ug/million cells Immunohistochemistry (FFPE) : 1-2ug/ml for 30 min at RT Western Blot : 1-2ug/ml
Limitations	This Annexin A1 antibody is available for research use only.



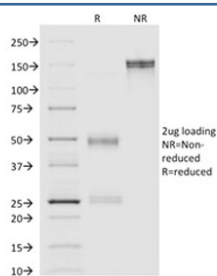
IHC staining of FFPE human prostate with Annexin A1 antibody (clone ANXA1/1671).
HIER: boil tissue sections in pH6, 10mM citrate buffer, for 10-20 min and allow to cool before testing.



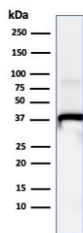
IHC staining of FFPE human spleen with Annexin A1 antibody (clone ANXA1/1671).
HIER: boil tissue sections in pH6, 10mM citrate buffer, for 10-20 min and allow to cool before testing.



Flow testing of fixed and permeabilized human HeLa cells with Annexin A1 antibody (clone ANXA1/1671). Red=isotype control, Blue= Annexin A1 antibody.



SDS-PAGE analysis of purified, BSA-free Annexin A1 antibody (clone ANXA1/1671) as confirmation of integrity and purity.



Western blot testing of human A549 cell lysate with Annexin A1 antibody (clone ANXA1/1671). Predicted molecular weight ~38 kDa.

Description

The ANXA1 gene belongs to the annexin family, and contains 4 annexin repeats. A pair of annexin repeats may form one binding site for calcium and a phospholipid. ANXA1 promotes membrane fusion and is involved in exocytosis. The gene for ANXA1 is upregulated in hairy cell leukemia (HCL), and its protein expression is specific for HCL. Detection of ANXA1 provides a simple, highly sensitive and specific assay for diagnosing HCL. Annexin A1 has also been found to be protective against DNA damage induced by heat in breast cancer cells, suggesting it is involved in tumor suppressive and protective activities, and also is associated with treatment resistance.

Application Notes

Optimal dilution of the Annexin A1 antibody to be determined by the researcher.

Immunogen

Recombinant human full-length protein was used as the immunogen for the Annexin A1 antibody.

Storage

Store the Annexin A1 antibody at 2-8°C (with azide) or aliquot and store at -20°C or colder (without azide).

